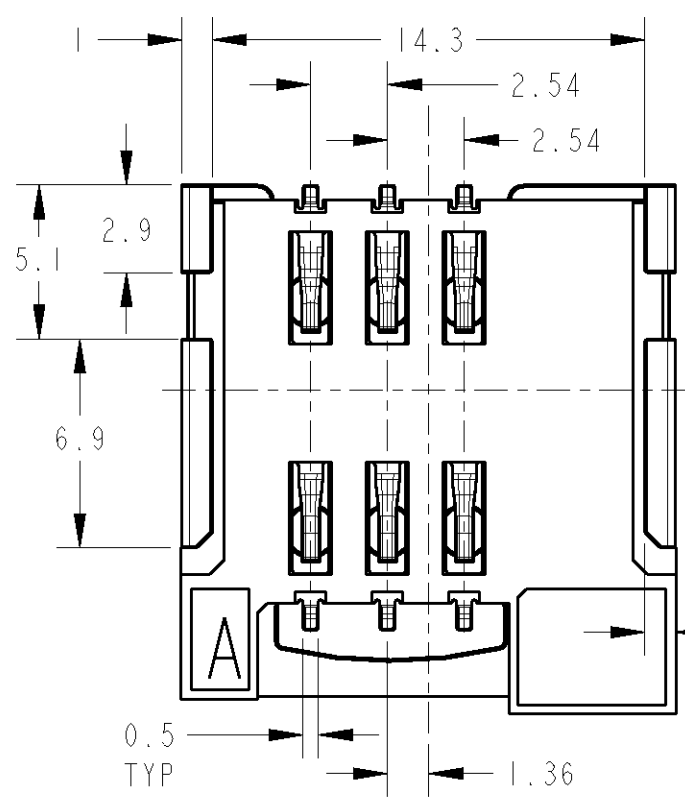
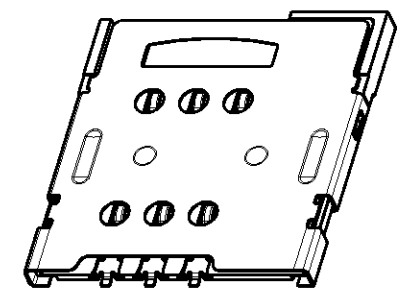
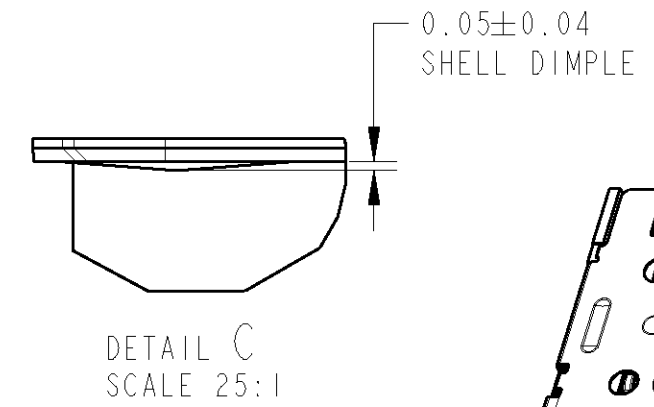
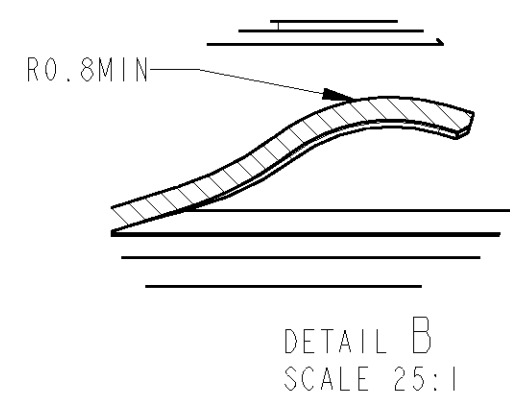
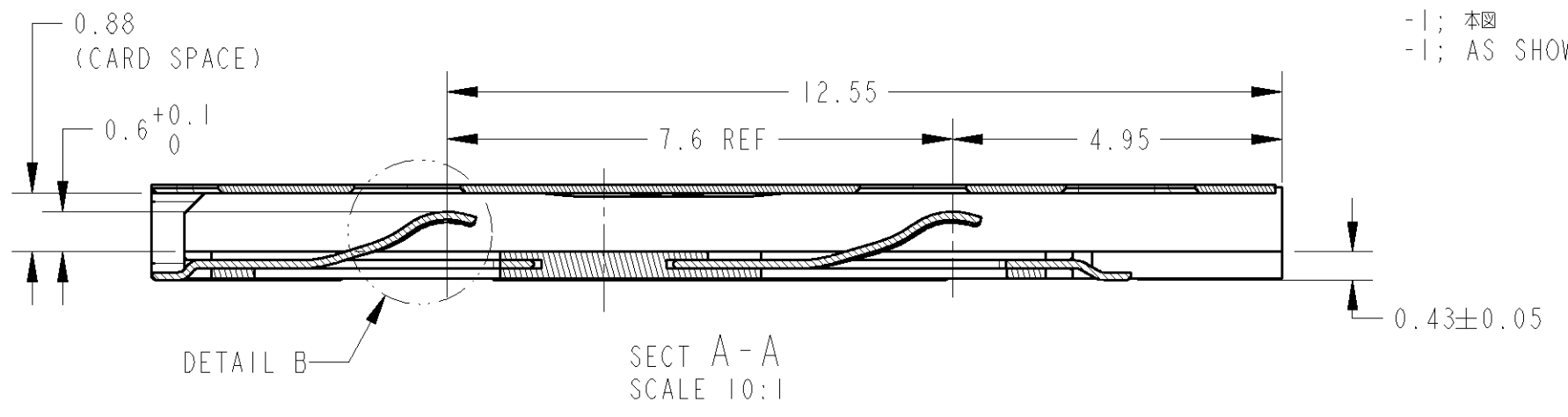
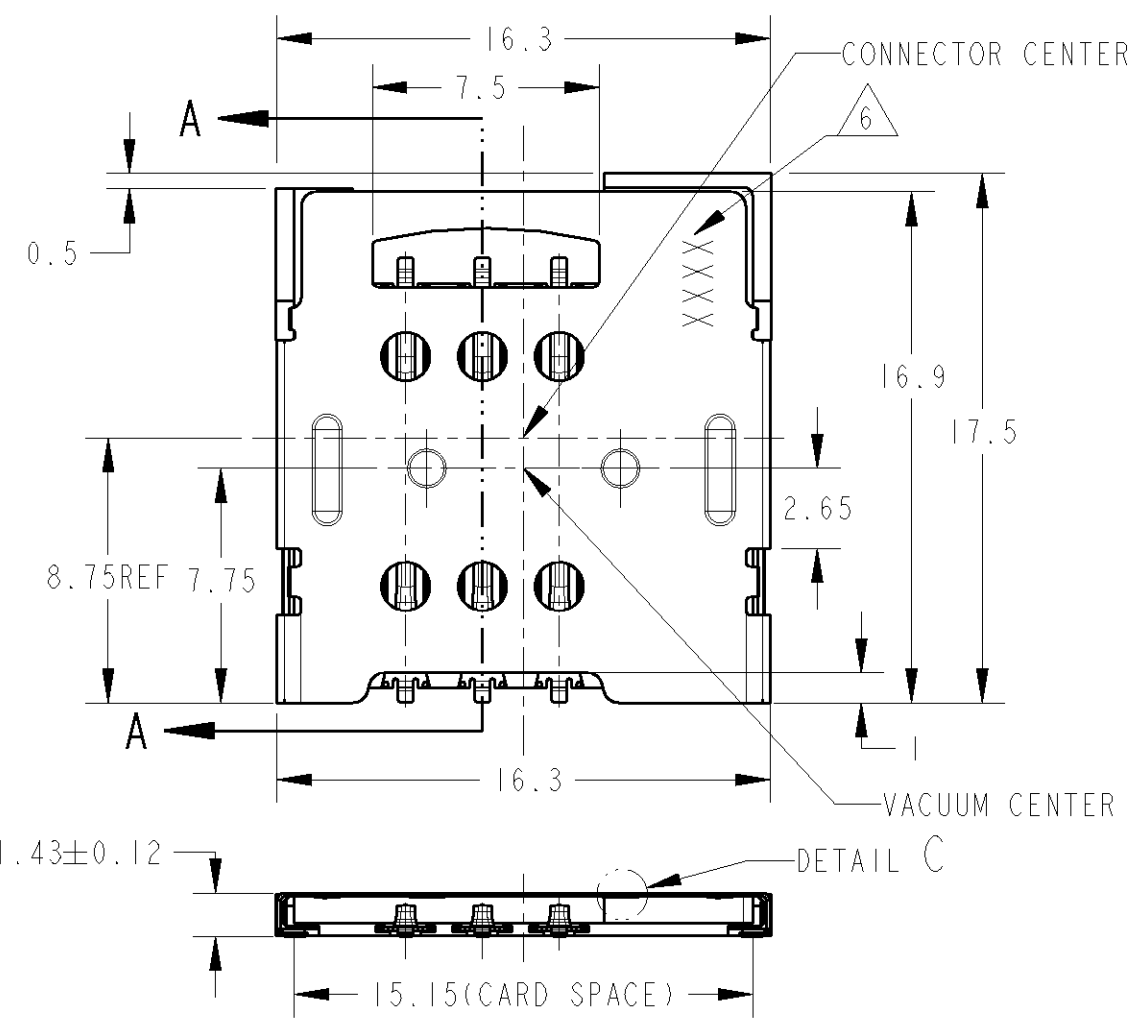


THIS DRAWING IS UNPUBLISHED. RELEASED FOR PUBLICATION 2006
 © COPYRIGHT 2006 BY TYCO ELECTRONICS CORPORATION. ALL RIGHTS RESERVED.

本図面に記載された内容はタイコ エレクトロニクス アンブ(株)の所有する情報を開示しております。
 無断で複写・配布する事を禁じます。 特許出願中

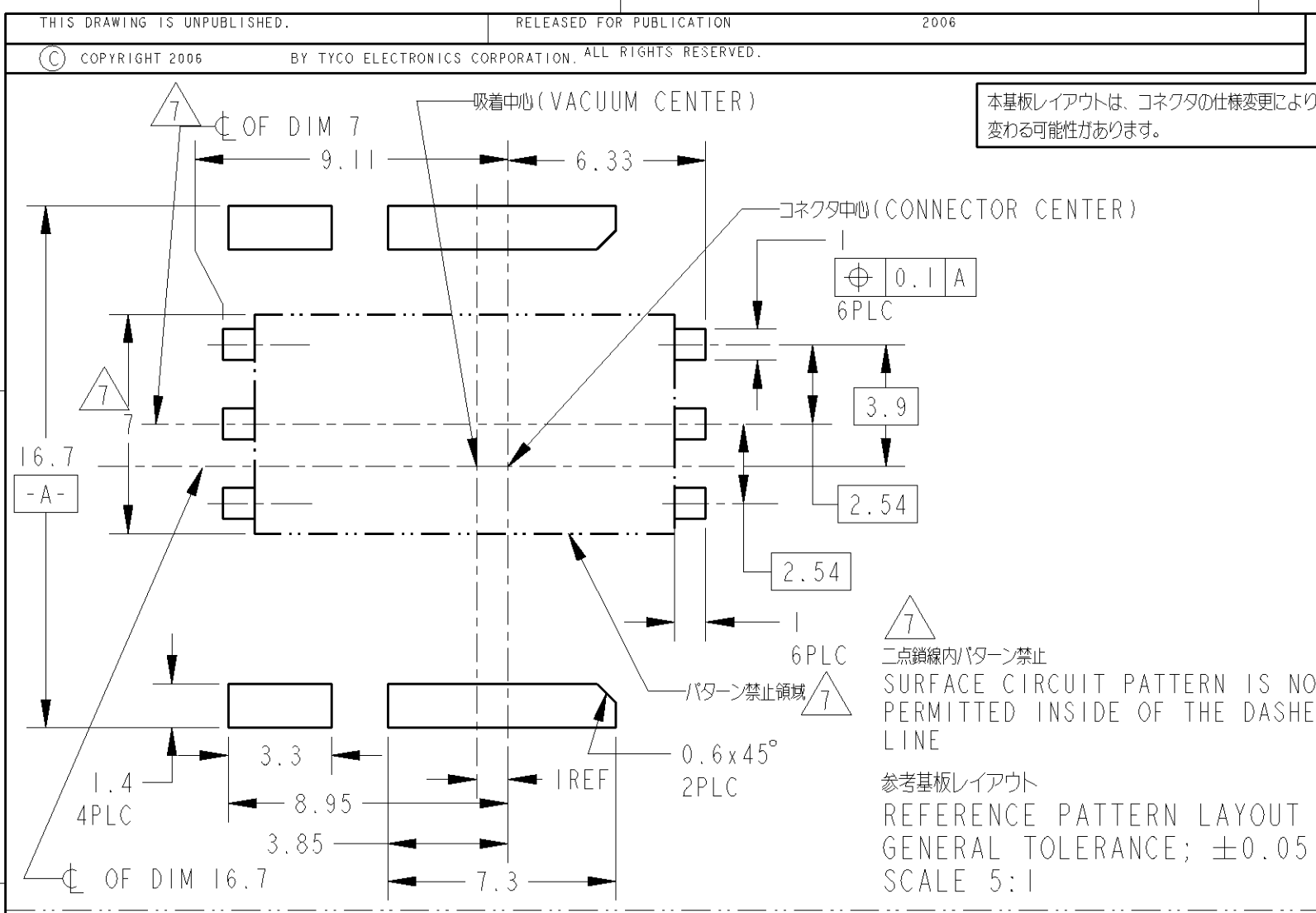
LOC	DIST	REVISIONS					
		P	LTR	DESCRIPTION	DATE	DWN	APVD
J	-		A	RELEASED	23MAY2007	M.O	Y.N
			AI	REVISED	19JUN2007	M.O	Y.N
			B	REVISED	22AUG2007	M.O	Y.N
			C	REVISED	08JUN2008	M.O	Y.N



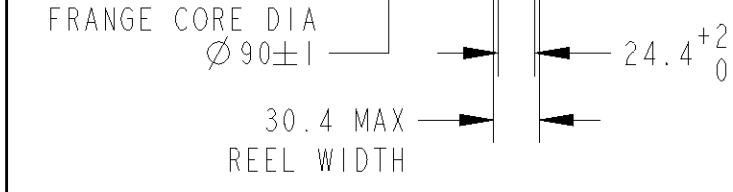
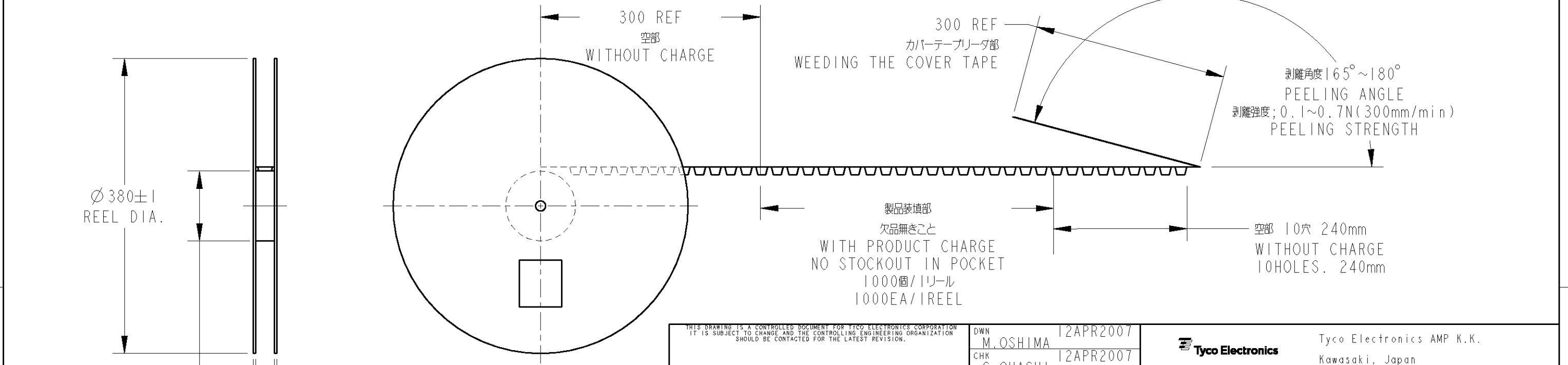
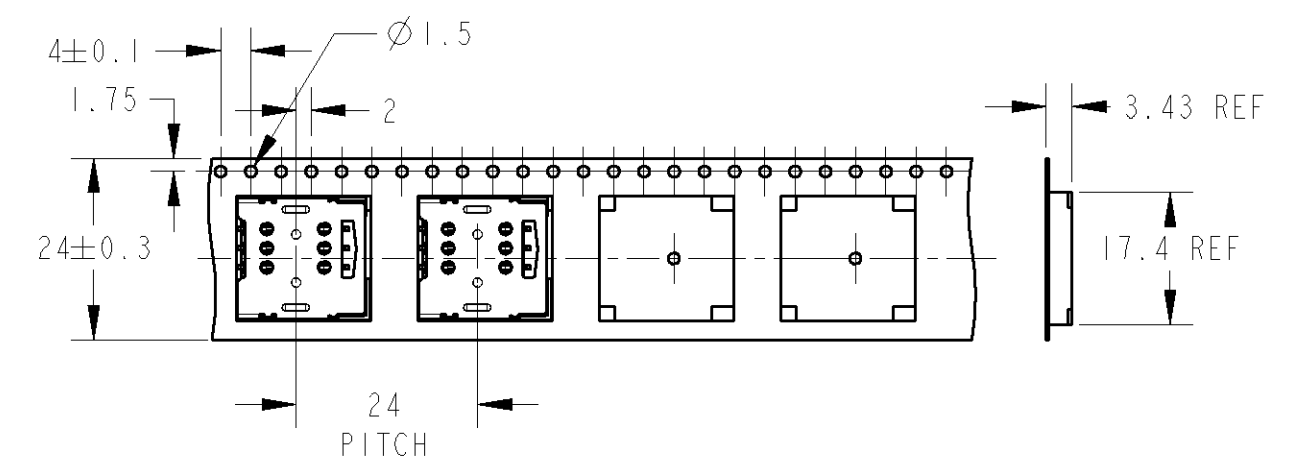
- 1 材料
 CLIP; ステンレス ± 0.12
 全面Ni下地 | 1.3 μ m以上の上にスズめっき | μ m以上
 CONTACT; 銅合金 ± 0.12
 全面Ni下地 | 1.3 μ m以上, 接点部Auめっき = 0.4 μ m以上, 半田付け部Auめっき = 0.05~0.13 μ m
 HOUSING; LCP
- 2 設計推奨半田厚みは100 μ m以上、推奨半田付け範囲は参考半田パターンに対して100%とする
- 3 部品保存期間; 常温常湿で6ヶ月以内
- 4 ドライバック及びベーキングは不要
- 5 コプラナリティ: 0.1MAX.
- 6 テートコード

- 1 MATERIAL
 CLIP; STAINLESS ± 0.12
 Ni; 1.3 μ m MIN. OVER TIN PL.
 CONTACT; COPPER ALLOY ± 0.12
 Ni; 1.3 μ m MIN. CONTACT POINT; 0.4 μ m MIN. TINE; 0.05 μ m MIN.
 HOUSING; LCP
- 2 RECOMMENDED SOLDERING THICKNESS; 100 μ m MIN.
 RECOMMENDED SOLDERING AREA; 100% OF REFERENCE LAYOUT PATTERN
- 3 PRODUCT RETENTION PERIOD; 6 MONTHS MAX AT ROOM TEMPERATURE AND HUMIDITY
- 4 NO DRY PACKING AND BAKING
- 5 COPLANARITY; 0.1MAX.
- 6 DATE CODE

THIS DRAWING IS A CONTROLLED DOCUMENT FOR TYCO ELECTRONICS CORPORATION IT IS SUBJECT TO CHANGE AND THE CONTROLLING ENGINEERING ORGANIZATION SHOULD BE CONTACTED FOR THE LATEST REVISION.		DWN M.OSHIMA 12APR2007	Tyco Electronics Tyco Electronics AMP K.K. Kawasaki, Japan	
DIMENSIONS: 単位: 概 mm	TOLERANCES UNLESS OTHERWISE SPECIFIED: 一般公差 ± 0.15 0-PLC \pm 1-PLC ± 0.5 2-PLC ± 0.13 3-PLC ± 0.013 4-PLC ± 0.0001 ANGLES \pm	CHK C.OHASHI 12APR2007	NAME Y.NAKAZAWA	
		APVD Y.NAKAZAWA 12APR2007	PRODUCT SPEC 製品規格 108-78472	
MATERIAL 材料	FINISH 仕上	APPLICATION SPEC 取付適用規格		SIZE A3
		WEIGHT (計算値) 0.45g		CAGE CODE 00779
CUSTOMER DRAWING		DRAWING NO C-1981898		RESTRICTED TO -
		SCALE 尺度 4:1		SHEET 1 OF 2
				REV C



LOC	DIST	REVISIONS			
P	LTR	DESCRIPTION	DATE	DWN	APVD
J	-	-	-	-	-
		SEE SHEET 1			



THIS DRAWING IS A CONTROLLED DOCUMENT FOR TYCO ELECTRONICS CORPORATION IT IS SUBJECT TO CHANGE AND THE CONTROLLING ENGINEERING ORGANIZATION SHOULD BE CONTACTED FOR THE LATEST REVISION.		DWN M. OSHIMA 12APR2007	Tyco Electronics Tyco Electronics AMP K.K. Kawasaki, Japan	
DIMENSIONS: mm		CHK C. OHASHI 12APR2007	NAME SUPER LOW PROFILE SIM WITH FULLCLIP HI.43 / HI.55 MAX	
TOLERANCES UNLESS OTHERWISE SPECIFIED: 0 PLC ±- 1 PLC ±0.5 2 PLC ±0.13 3 PLC ±0.013 4 PLC ±0.0001 ANGLES ±-		APVD Y. NAKAZAWA 12APR2007	DRAWING NO A3 00779 C-1981898	
MATERIAL		PRODUCT SPEC 108-XXXX	RESTRICTED TO	
FINISH		APPLICATION SPEC	SCALE 4:1 SHEET 2 OF 2 REV C	
		WEIGHT 0.45g	CUSTOMER DRAWING	