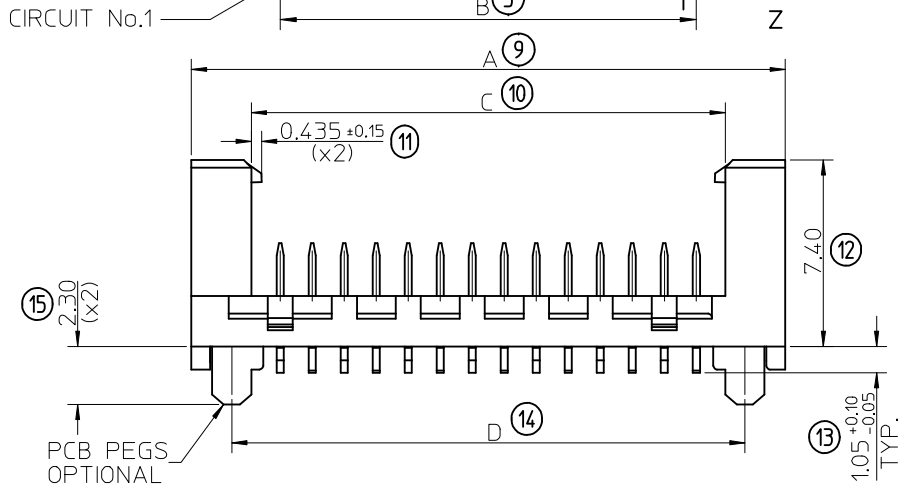


PART NO.	NUMBER OF CKTS	DIMN. A	DIMN. B	DIMN. C	DIMN. D
90816-**04	4	10.86	3.81	6.11	7.66
90816-**06	6	13.40	6.35	8.65	10.20
90816-**08	8	15.94	8.89	11.19	12.74
90816-**10	10	18.48	11.43	13.73	15.28
90816-**12	12	21.02	13.97	16.27	17.82
90816-**14	14	23.56	16.51	18.81	20.36
90816-**16	16	26.10	19.05	21.35	22.90
90816-**18	18	28.64	21.59	23.89	25.44
90816-**20	20	31.18	24.13	26.43	27.98
90816-**22	22	33.72	26.67	28.97	30.52
90816-**24	24	36.26	29.21	31.51	33.06
90816-**26	26	38.80	31.75	34.05	35.60

NOTE 7



14 CIRCUIT SHOWN FOR ILLUSTRATION ONLY.

90816 - * * * *

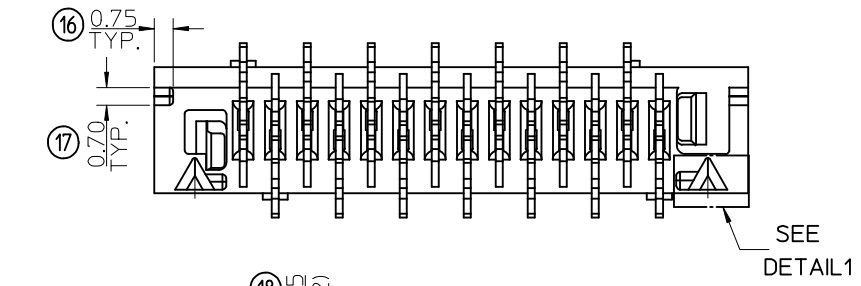
CIRCUIT SIZE.

	PCB PEGS	TUBE PACKED	TAPE & REEL PACKED
0	YES	YES	NO
2	YES	NO	YES
3	NO	YES	NO
5	NO	NO	YES

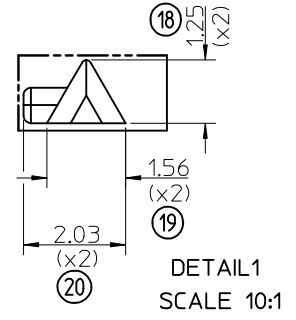
0 = TIN VERSION
3 = PALLADIUM NICKEL VERSION

NOTES:

- MATERIAL HOUSING: PPA, GLASS-FILLED, COLOUR: BLACK, UL 94-HB. TERMINAL: BRASS
 - FINISHES: TERMINAL PALLADIUM NICKEL (PdNi); CONTACT AREA: SELECTIVE PdNi; 0.6 MICROMETRE MINIMUM UNDER 0.05 MICROMETRE MINIMUM GOLD FLASH SMT TAILS: TIN (Sn), 3 MICROMETRE MIN OVER NICKEL UNDERPLATE. TIN: 3 MICROMETRE MINIMUM OVER NICKEL UNDERPLATE.
 - PRODUCT SPECIFICATION: PS-99020-0011
 - PACKAGING SPECIFICATION: FOR TAPE AND REEL SEE: PK-90816-006 FOR TUBE SEE: PK-90816-007
 - MATES WITH MOLEX 90327 PART SERIES.
 - ALL SMT TAILS TO LIE WITHIN A COPLANARITY BAND OF 0 - 0.10 MICROMETRE REF. FROM EACH OTHER.
 - 4 CIRCUIT PART NOT AVAILABLE IN TAPE AND REEL.
- LAST INSPECTION NUMBER USED: 20



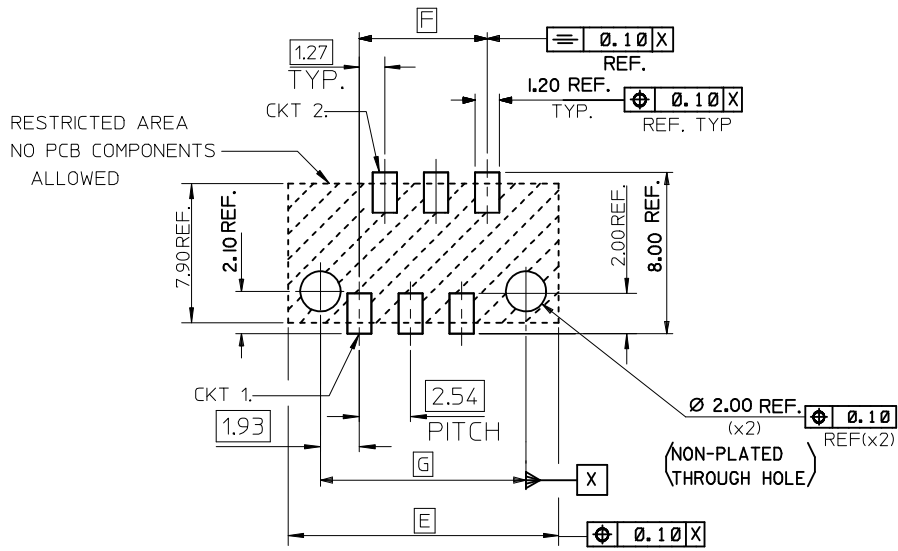
SEE DETAIL 1



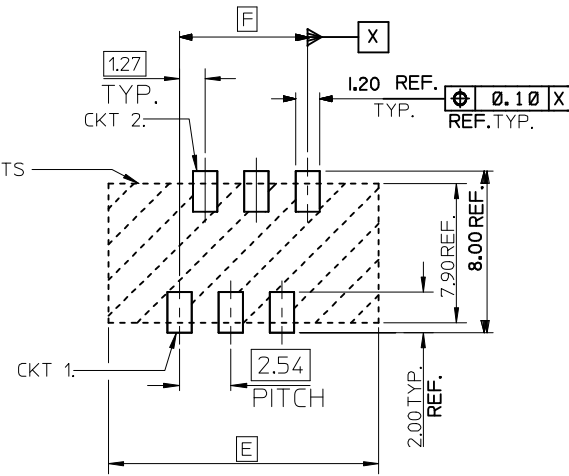
ADDED UL FLAMMABILITY RATING, MOD PCB DIMS EC NO: IPG2013-0901	2012/07/25	DRW:DBYRNES	2013/01/22	CHKD:DMAHER	2013/01/23	APPR:STGRIFFIN
DESCRIPTION						
REV						

QUALITY SYMBOLS	GENERAL TOLERANCES (UNLESS SPECIFIED)		DIMENSION STYLE		SCALE	DESIGN UNITS	THIRD ANGLE PROJECTION
	mm	INCH	MM ONLY		5:1	METRIC	
▽=0	4 PLACES	± ---	± ---	DRAWN BY	DATE	TITLE	PICOFLEX SMT LATCHED HEADER
∇=0	3 PLACES	± ---	± ---	CHECKED BY	DATE		
	2 PLACES	± 0.25	± ---	JDWALLACE	2008/08/26		
	1 PLACE	± 0.35	± ---	APPROVED BY	DATE		
	ANGULAR ± 2 °		EFOLAN	2010/11/04			
DRAFT WHERE APPLICABLE MUST REMAIN WITHIN DIMENSIONS			MATERIAL NO.		DOCUMENT NO.		SHEET NO.
			SEE CHART		SD-90816-001		1 OF 2

DRAWN BY		DATE	TITLE	
D.BYRNES		2008/08/16	PICOFLEX SMT LATCHED HEADER	
CHECKED BY		DATE		
JDWALLACE		2008/08/26		
APPROVED BY		DATE		
EFOLAN		2010/11/04		
MATERIAL NO.		DOCUMENT NO.		SHEET NO.
SEE CHART		SD-90816-001		1 OF 2
THIS DRAWING CONTAINS INFORMATION THAT IS PROPRIETARY TO MOLEX INCORPORATED AND SHOULD NOT BE USED WITHOUT WRITTEN PERMISSION				



RECOMMENDED PCB THICKNESS 1.60±0.14
 PCB LAYOUT FOR CLEARANCE FIT WITH PCB PEGS
 HEADER VERSIONS 90816-*0**/*2**
 VIEWED FROM COMPONENT SIDE
 6CKT PART SHOWN FOR REFERENCE



PCB LAYOUT WITHOUT PCB PEGS
 HEADER VERSIONS 90816-*3**/*5**
 VIEWED FROM COMPONENT SIDE
 6CKT PART SHOWN FOR REFERENCE

90816-***26	26	38.80	31.75	35.60
90816-***24	24	36.26	29.21	33.06
90816-***22	22	33.72	26.67	30.52
90816-***20	20	31.18	24.13	27.98
90816-***18	18	28.64	21.59	25.44
90816-***16	16	26.10	19.05	22.90
90816-***14	14	23.56	16.51	20.36
90816-***12	12	21.02	13.97	17.82
90816-***10	10	18.48	11.43	15.28
90816-***08	8	15.94	8.89	12.74
90816-***06	6	13.40	6.35	10.20
90816-***04	4	10.86	3.81	7.66
PART NO.	NUMBER OF CKTS	DIM. E	DIM. F	DIM. G

SEE SHEET 1 EC NO: IPG2013-0901 TDRW:DBYRNES 2012/07/25 CHKD:DMAHER 2013/01/22 APPR:STGRIFFIN 2013/01/23	QUALITY SYMBOLS	GENERAL TOLERANCES (UNLESS SPECIFIED)	DIMENSION STYLE	SCALE	DESIGN UNITS	THIRD ANGLE PROJECTION
	▽=0 ∇=0	mm INCH 4 PLACES ± --- ± --- 3 PLACES ± --- ± --- 2 PLACES ± 0.25 ± --- 1 PLACE ± 0.35 ± --- ANGULAR ± 2 °	MM ONLY	5:1	METRIC	
			DRAWN BY DATE	TITLE		
			D.O.BYRNES 2008/08/16	PICOFLEX SMT LATCHED HEADER		
		CHECKED BY DATE				
		JDWALLACE 2008/08/26				
		APPROVED BY DATE				
		EFOLAN 2010/11/04	MOLEX INCORPORATED			
		MATERIAL NO.	DOCUMENT NO.			
			SD-90816-001			
		DRAFT WHERE APPLICABLE MUST REMAIN WITHIN DIMENSIONS	SEE SHEET 1	SHEET NO. 2 OF 2		
			SIZE A3	THIS DRAWING CONTAINS INFORMATION THAT IS PROPRIETARY TO MOLEX INCORPORATED AND SHOULD NOT BE USED WITHOUT WRITTEN PERMISSION		