

Technical specification:

Rated voltage: 4pos 5pos
IEC 61076-2-101 250 V 60 V

Current rating: 4 A at 40°C
IEC 61076-2-101

Insulation resistance: >=100 MΩ
IEC 60512

Pollution degree: 3/2
IEC 60664-1

Degree of protection: IP 67, in mated condition
IEC 60529

Temperature range: -30°C ... +85°C
EN 60512-11-10
-40°C ... +85°C
EN 60512-11-4

Mating cycles: >=100
IEC 60512-9a

Materials:

Contact: CuZn, Ni b / Au 0,2 gal.

Contact carrier: PA GF, UL 94 V-0

Sealing: FPM

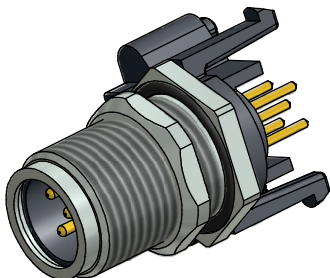
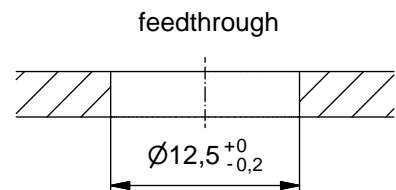
Socket housing: CuZn, nickel plated

Shroud: spring steel, nickel plated

Installation specification:

recommended torque: 0,8-1 Nm

Conec installation tool: Torque wrench: 36-000200
Insert across flats 14: 36-000370
Insert across flats 15: 36-000320



Part no:	Description:	Pos	Note:
43-01174	SAL - 12 - FSH4 - X10	4	
43-01175	SAL - 12S - FSH4 - X10	4	with shroud
43-01176	SAL - 12 - FSH5.1 - X10	5	
43-01177	SAL - 12S - FSH5.1 - X10	5	with shroud

DO NOT ALTER CAD DRAWING BY HAND

RoHS & REACH compliant

Index: b 21.08.13 MG Ä4884
Data sheet revised, width across flats of the counter nut changed, installation specification added

general tolerance: 0 ± 0,50mm
0,0 ± 0,25mm
0,00 ± 0,10mm
* ± 1,5°

THIS DRAWING MAY NOT BE COPIED OR REPRODUCED IN ANY WAY, AND MAY NOT BE PASSED ON TO A THIRD PARTY WITHOUT WRITTEN PERMISSION. OWNERSHIP AND COPYRIGHT OF CONEC GmbH

dim. in mm

date	name
drawn 11.10.07	Fromm
appd. 18.10.07	W.Schmidt

CONEC®

title:
Male socket M12x1 axial, backmounting, dip solder, X10

dwg no:
43K1A500

part no: