

30.5-MM AND 22.5-MM PUSHBUTTON ENCLOSURES, TYPE 4X



INDUSTRY STANDARDS

UL 508A Listed; Type 4, 4X, 12; File Number E61997
 cUL Listed per CSA C22.2 No 94; Type 4, 4X, 12; File Number E61997

NEMA/EEMAC Type 4X, 12, 13
 CSA File Number 42186: Type 4, 4X, 12
 IEC 60529, IP66

APPLICATION

Punched specifically to house either 30.5-mm or 22.5-mm oil-tight pushbuttons, switches and pilot lights. Enclosures provide protection against dirt, dust, oil and water.
 See *Mild Steel* chapter for related mild steel enclosures.

SPECIFICATIONS

- 14 gauge bodies, 16 gauge covers; Type 304 or Type 316L stainless steel
- Seams continuously welded and ground smooth
- Captivated cover screws thread into sealed wells
- Bonding provision on door; grounding nut on body
- 4-way pushbutton holes accept all brands of oil-tight pushbuttons, switches and pilot lights
- Enclosures with more than one column of pushbutton holes have internal detachable hinge to hold cover open during wiring, yet permit immediate removal
- Oil-resistant gasket

FINISH

Cover and sides of body have smooth #4 brushed finish.

ACCESSORIES

Industrial Corrosion Inhibitors
 HOL-SEALERS Hole Seals
 Tamper-Resistant Screws

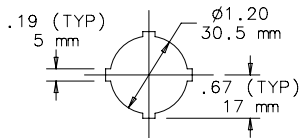
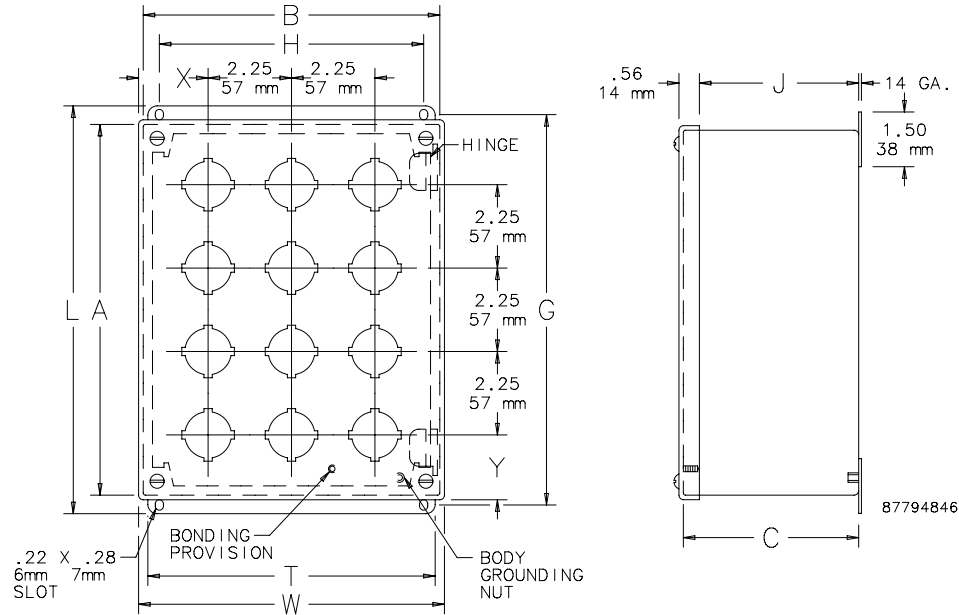
BULLETIN: PB1S

Standard Product

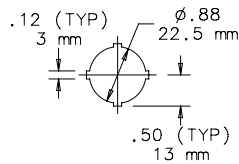
Catalog Number	AxBxC in./mm	Hole Size	Stainless Steel Type	Gauge	Number of Holes	Mounting G x H in./mm	Overall L x W in./mm	J in./mm	T in./mm	X in./mm	Y in./mm
E1PBSS	3.50 x 4.25 x 2.75 89 x 108 x 70	30.5 mm	Type 304	16	1	4.00 x 2.38 102 x 60	4.50 x 3.47 114 x 88	2.31 59	3.00 76	1.73 47	1.86 47
E1PBSS6	3.50 x 4.25 x 2.75 89 x 108 x 70	30.5 mm	Type 316L	16	1	4.00 x 2.38 102 x 60	4.50 x 3.47 114 x 88	2.31 59	3.00 76	1.73 47	1.86 47
E1PBGSS	3.50 x 4.25 x 2.75 89 x 108 x 70	22.5 mm	Type 304	16	1	4.00 x 2.38 102 x 60	4.50 x 3.47 114 x 88	2.31 59	3.00 76	1.73 47	1.86 47
E2PBSS	5.75 x 3.25 x 2.75 146 x 83 x 70	30.5 mm	Type 304	16	2	6.25 x 2.38 159 x 60	6.75 x 3.47 171 x 88	2.31 59	3.00 76	1.73 44	1.86 47
E2PBSS6	5.75 x 3.25 x 2.75 146 x 83 x 70	30.5 mm	Type 316L	16	2	6.25 x 2.38 159 x 60	6.75 x 3.47 171 x 88	2.31 59	3.00 76	1.73 44	1.86 47
E2PBGSS	5.75 x 3.25 x 2.75 146 x 83 x 70	22.5 mm	Type 304	16	2	6.25 x 2.38 159 x 60	6.75 x 3.47 171 x 88	2.31 59	3.00 76	1.73 44	1.86 47
E3PBSS	8.00 x 3.25 x 2.75 203 x 83 x 70	30.5 mm	Type 304	14	3	8.50 x 2.38 216 x 60	9.00 x 3.47 229 x 88	2.31 59	3.00 76	1.73 44	1.86 47
E3PBSS6	8.00 x 3.25 x 2.75 203 x 83 x 70	30.5 mm	Type 316L	14	3	8.50 x 2.38 216 x 60	9.00 x 3.47 229 x 88	2.31 59	3.00 76	1.73 44	1.86 47
E3PBGSS	8.00 x 3.25 x 2.75 203 x 83 x 70	22.5 mm	Type 304	14	3	8.50 x 2.38 216 x 60	9.00 x 3.47 229 x 88	2.31 59	3.00 76	1.73 44	1.86 47
E4PBSS	10.00 x 3.25 x 2.75 254 x 83 x 70	30.5 mm	Type 304	14	4	10.75 x 2.38 273 x 60	11.25 x 3.47 286 x 88	2.31 59	3.00 76	1.73 44	1.86 47
E4PBSS6	10.00 x 3.25 x 2.75 254 x 83 x 70	30.5 mm	Type 316L	14	4	10.75 x 2.38 273 x 60	11.25 x 3.47 286 x 88	2.31 59	3.00 76	1.73 44	1.86 47
E4PBGSS	10.00 x 3.25 x 2.75 254 x 83 x 70	22.5 mm	Type 304	14	4	10.75 x 2.38 273 x 60	11.25 x 3.47 286 x 88	2.31 59	3.00 76	1.73 44	1.86 47
E6PBSS	9.50 x 6.25 x 3.00 241 x 159 x 76	30.5 mm	Type 304	14	6	10.00 x 5.38 254 x 137	10.50 x 6.47 267 x 164	2.56 65	6.00 152	2.11 54	2.61 66
E6PBSS6	9.50 x 6.25 x 3.00 241 x 159 x 76	30.5 mm	Type 316L	14	6	10.00 x 5.38 254 x 137	10.50 x 6.47 267 x 164	2.56 65	6.00 152	2.11 54	2.61 66
E6PBGSS	9.50 x 6.25 x 3.00 241 x 159 x 76	22.5 mm	Type 304	14	6	10.00 x 5.38 254 x 137	10.50 x 6.47 267 x 164	2.56 65	6.00 152	2.11 54	2.61 66
E9PBSS	9.50 x 8.50 x 3.00 241 x 216 x 76	30.5 mm	Type 304	14	9	10.00 x 7.62 254 x 194	10.50 x 8.72 267 x 221	2.56 65	8.25 210	2.11 54	2.61 66
E9PBSS6	9.50 x 8.50 x 3.00 241 x 216 x 76	30.5 mm	Type 316L	14	9	10.00 x 7.62 254 x 194	10.50 x 8.72 267 x 221	2.56 65	8.25 210	2.11 54	2.61 66

Catalog Number	AxBxC in./mm	Hole Size	Stainless Steel Type	Gauge	Number of Holes	Mounting G x H in./mm	Overall L x W in./mm	J in./mm	T in./mm	X in./mm	Y in./mm
E9PBGSS	9.50 x 8.50 x 3.00	22.5 mm	Type 304	14	9	10.00 x 7.62	10.50 x 8.72	2.56	8.25	2.11	2.61
	241 x 216 x 76					254 x 194	267 x 221	65	210	54	66
E12PBSS	11.75 x 8.50 x 3.00	30.5 mm	Type 304	14	12	12.25 x 7.62	12.75 x 8.72	2.56	8.25	2.11	2.61
	298 x 216 x 76					311 x 194	324 x 221	65	210	54	66
E12PBSS6	11.75 x 8.50 x 3.00	30.5 mm	Type 316L	14	12	12.25 x 7.62	12.75 x 8.72	2.56	8.25	2.11	2.61
	298 x 216 x 76					311 x 194	324 x 221	65	210	54	66
E12PBGSS	11.75 x 8.50 x 3.00	22.5 mm	Type 304	14	12	12.25 x 7.62	12.75 x 8.72	2.56	8.25	2.11	2.61
	298 x 216 x 76					311 x 194	324 x 221	65	210	54	66

Catalog number ending in 6 is Type 316L stainless steel.



30.5mm 4-WAY



22.5mm 4-WAY

NOTE: Cover bonding provision location varies based on pushbutton pattern.

Hole Arrangement



- | | | | | | | |
|---------|---------|---------|---------|---------|---------|----------|
| E1PBSS | E2PBSS | E3PBSS | E4PBSS | E6PBSS | E9PBSS | E12PBSS |
| E1PBSS6 | E2PBSS6 | E3PBSS6 | E4PBSS6 | E6PBSS6 | E9PBSS6 | E12PBSS6 |
| E1PBGSS | E2PBGSS | E3PBGSS | E4PBGSS | E6PBGSS | E9PBGSS | E12PBGSS |