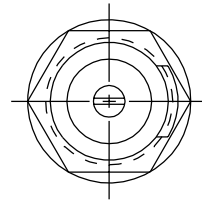
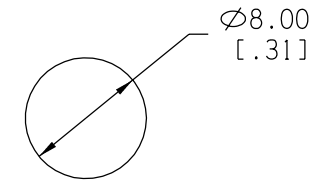
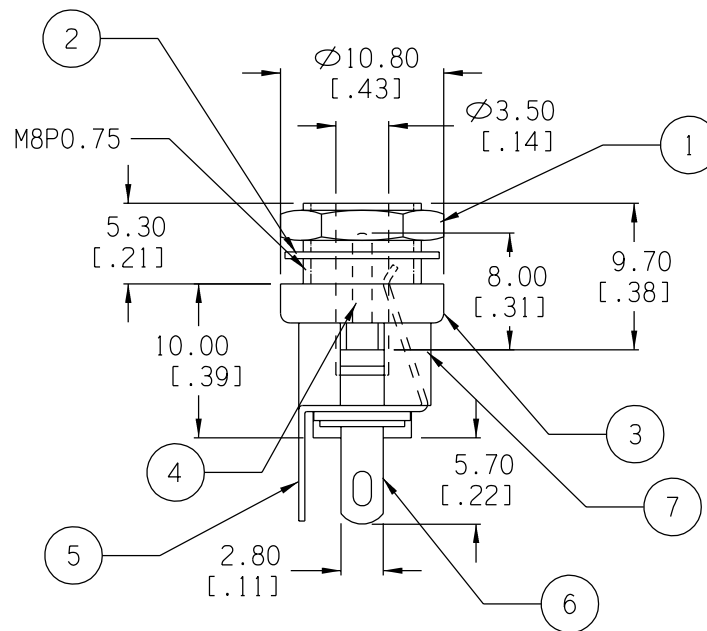


Date	SYM	REVISION RECORD	AUTH	DR.	CK.
02/07/04	A	REVISED TITLE	T.B.	B.S.	
10/29/05	B	ADDED TEMPERATURE RATING	T.B.	B.S.	



NOTE:  
 MAX. RATING: 12V 5A.  
 TEMPERATURE RATING: -15°C TO 90°C



PANEL CUT-OUT

ITEM NO.	PART NAME	MATL. SPECIFICATION	Tolerance (Inches)	Memory Protection Devices, Inc.	
1	HEX. NUT	BRASS, NICKLE PLTD.	Decimal	200 Broad Hollow Road, Farmingdale, New York 11735	
2	FLAT WASHER	IRON, NICKLE PLTD.			
3	TOP HOUSING	BRASS, NICKLE PLTD.	±.5 (.020)	Scale	Drawn By B.S.
4	PIN (Ø1.3)	BRASS, NICKLE PLTD.		Approved By T.B.	
5	SOLDER TERMINAL	COPPER, SILVER PLTD.	Fractional	Title DC JACK - CHASSIS MOUNT, OPEN CIRCUIT, SOLDER LUGS, 1.3 X 3.5mm	
6	SOLDER TERMINAL	PHOS. BRONZE, SILVER PLTD.			
7	BOTTOM HOUSING	NYLON, BLACK	Angular	Date	Drawing Number
				± 3°	10/29/05