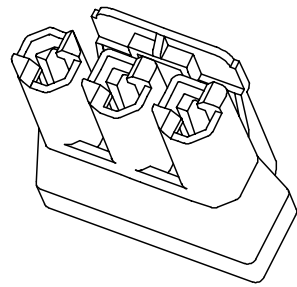
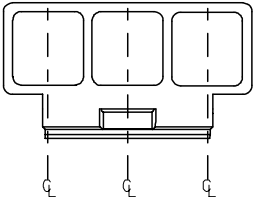


13 12 11 10 9 8 7 6 5 4 3 2 1

J
I
H
G
F
E
D
C
B
A

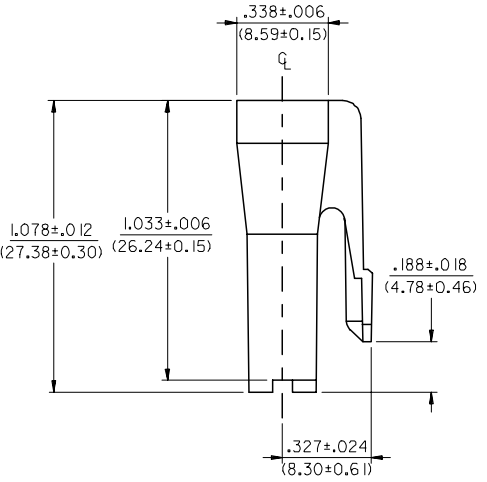
J
I
H
G
F
E
D
C
B
A

.590±.006
(14.99±0.15)

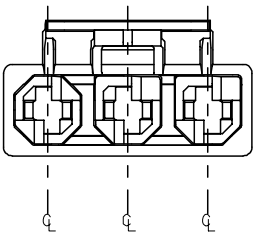
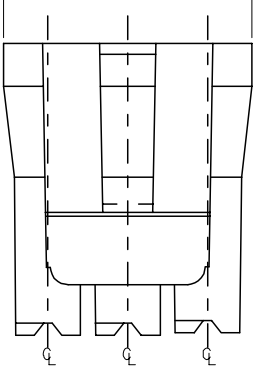


43335-5023
(POSITIONED TO SHOW THE MATING END)

.338±.006
(8.59±0.15)



.918±.010
(23.32±0.25)



NOTES:

1. MATERIAL: 6/6 NYLON, UL 94V-2, COLOR: BLACK.
2. FINISH: NONE
3. SEE PSX-43335-9999 FOR APPLICABLE SPECIFICATIONS.
4. THIS CONNECTOR HOUSING FOR USE WITH 43375-**** TERMINALS.
5. SEE SDES-43335-9002 FOR REQUIREMENTS FOR MATING INTERFACE.

ME10 & CHANGED DIM. EC NO: UCP2005-1536 DRW:ADRA1NOL 2005/01/31 CHKD:WIRKUS 2005/01/31 APPR:BMIRKUS 2005/02/01 A2	QUALITY SYMBOLS	GENERAL TOLERANCES (UNLESS SPECIFIED)		DIMENSION STYLE IN/MM		SCALE 3:1	DESIGN UNITS INCH	THIRD ANGLE PROJECTION
	▽=0 ▽=0	mm	INCH	DRAWN BY KBP	DATE 12/16/97	TITLE 3 CKT RECEPTACLE HOUSING .125X.020 FLAT BLADE SYSTEM W/TPA		
		4 PLACES ± --- ± ---	3 PLACES ± --- ± ---	CHECKED BY KBP	DATE 12/16/97	MATERIAL NO. 43335-5023		
		2 PLACES ± --- ± ---	1 PLACE ± --- ± ---	APPROVED BY JC	DATE 12/16/97	DOCUMENT NO. SD-43335-5023		
	ANGULAR ±1/2°		DRAFT WHERE APPLICABLE MUST REMAIN WITHIN DIMENSIONS		SHEET NO. 1 OF 1		THIS DRAWING CONTAINS INFORMATION THAT IS PROPRIETARY TO MOLEX INCORPORATED AND SHOULD NOT BE USED WITHOUT WRITTEN PERMISSION	

12 11 10 9 8 7 6 5 4 3 2 1