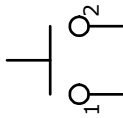
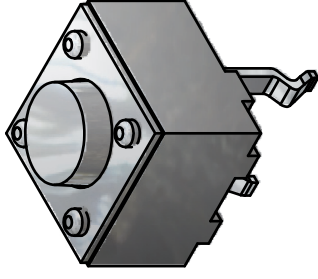


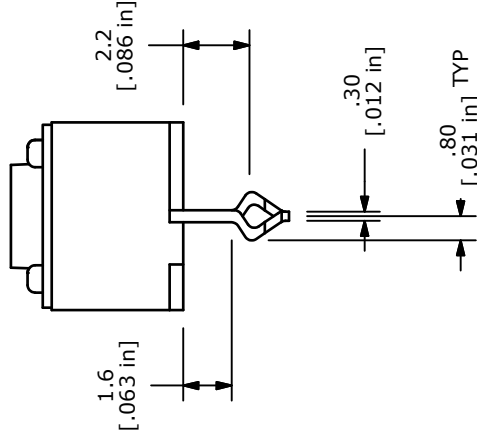
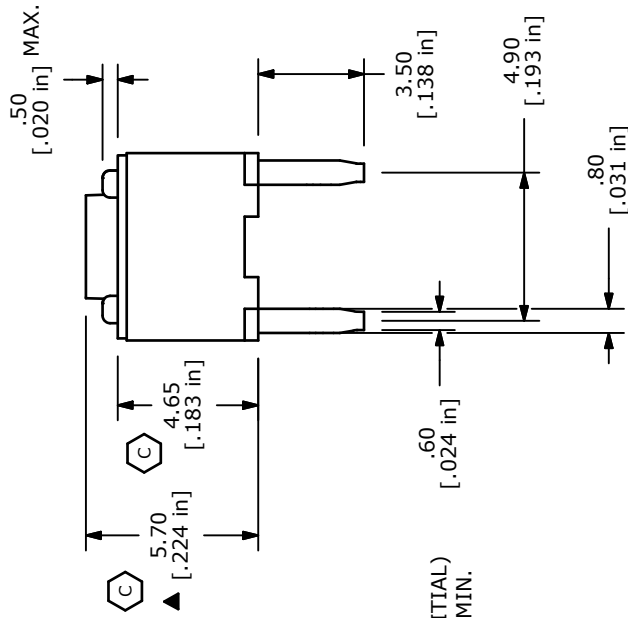
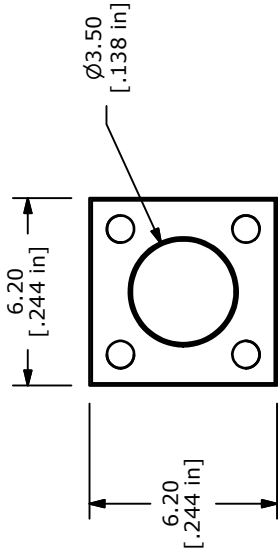
RECOMMENDED PCB LAYOUT



▲ CIRCUIT: SPST



ISOMETRIC



- NOTES:
1. ALL DIMENSIONS IN MM
  2. GENERAL TOLERANCE: X.X=±0.4  
X.XX=±0.25
  3. TERM. NOS. FOR REFERENCE ONLY.
  4. RATING: 30VDC, 50mA
  5. OPERATING FORCE: 70 ± 20 gms
  6. TRAVEL: 0.35mm +/-0.2mm
  7. CONTACT RESISTANCE: 100 MILLI OHMS MAX. (INITIAL)
  8. MECHANICAL/ELECTRICAL LIFE 1,000,000 CYCLES MIN.
  9. OPERATING TEMPERATURE: -25C to +85C.
  10. INSULATION RESISTANCE: 100M OHMS.
  11. DIELECTRIC STRENGTH: 600VAC, 1MINUTE.
  12. 2002/95/EC (ROHS) COMPLIANT
  13. PACKAGING: BULK
  14. ▲ DENOTES CRITICAL PARAMETER

E-SWITCH®		TITLE TL1150AF070Q	
C 19538	CHANGE DIMS was 5.75 & 4.9	12/20/10	BGL
B 16736	ADDED .5 DIM AND FIXED 1.6 DIM	12/7/06	TN
A 16674	RELEASED FOR PRODUCTION	11/17/06	TN
REV	PCR NO	DESCRIPTION	DATE
THE INFORMATION CONTAINED IN THIS DOCUMENT IS PROPRIETARY TO E-SWITCH AND IS NOT TO BE COPIED OR TRANSFERRED			
SCALE	4:1	DATE	12/7/2006
DR	TN	DWG	Q970065
REV	C		