

PART NAME	UTILIBOX (STYLE E)	PART No.	CU-789 TO CU-792
-----------	--------------------	----------	------------------

MATERIAL:
 ABS THERMOPLASTIC
 (FLAMMABILITY RATING OF 94V-0 AT
 0.070" THICKNESS AND CONTINUOUS
 USE TEMPERATURE OF 70° C.)

COLOR: BLACK

COVER REDUCES INSIDE HEIGHT BY 0.075.

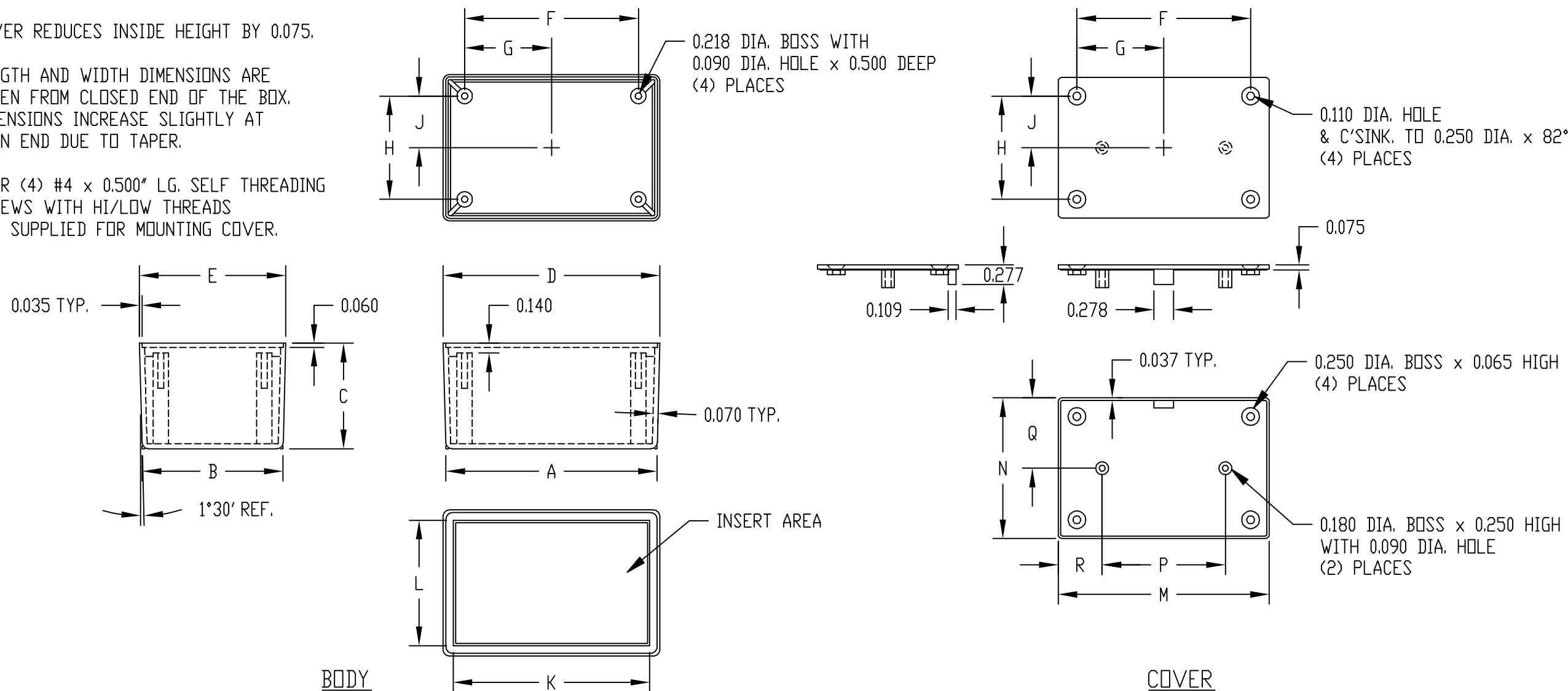
LENGTH AND WIDTH DIMENSIONS ARE
 TAKEN FROM CLOSED END OF THE BOX.
 DIMENSIONS INCREASE SLIGHTLY AT
 OPEN END DUE TO TAPER.

FOUR (4) #4 x 0.500" LG. SELF THREADING
 SCREWS WITH HI/LOW THREADS
 ARE SUPPLIED FOR MOUNTING COVER.

FINISH:
 BODY - OUTSIDE SURFACES ARE TEXTURED FINISH
 WITH TEXTURED INSERT AREA.
 COVER - SURFACES ARE SMOOTH.

NOTE: ALL DIMENSIONS HAVE ±0.010 TOLERANCE
 UNLESS OTHERWISE SPECIFIED.

MOUNTING BOSSES USE EITHER M2.5 METRIC
 OR #4 STD. SHEET METAL SCREWS x 0.250" LG.
 (NOT SUPPLIED)



PART No.	A	B	C	D	E	F	G	H	J	K	L	M	N	P	Q	R
CU-789	3.000	2.000	0.900	3.047	2.047	2.625	1.313	1.625	0.813	3.015	2.015	3.010	2.010	1.750	1.005	0.633
CU-790	3.000	2.000	1.500	3.079	2.079	2.625	1.313	1.625	0.813	3.015	2.015	3.010	2.010	1.750	1.005	0.633
CU-791	3.000	3.000	1.500	3.079	3.079	2.625	1.313	2.625	1.313	3.015	3.015	3.015	3.015	1.750	1.508	0.633
CU-792	4.000	1.750	1.000	4.052	1.802	3.600	1.800	1.340	0.670	3.975	1.725	3.970	1.720	3.000	0.860	0.485