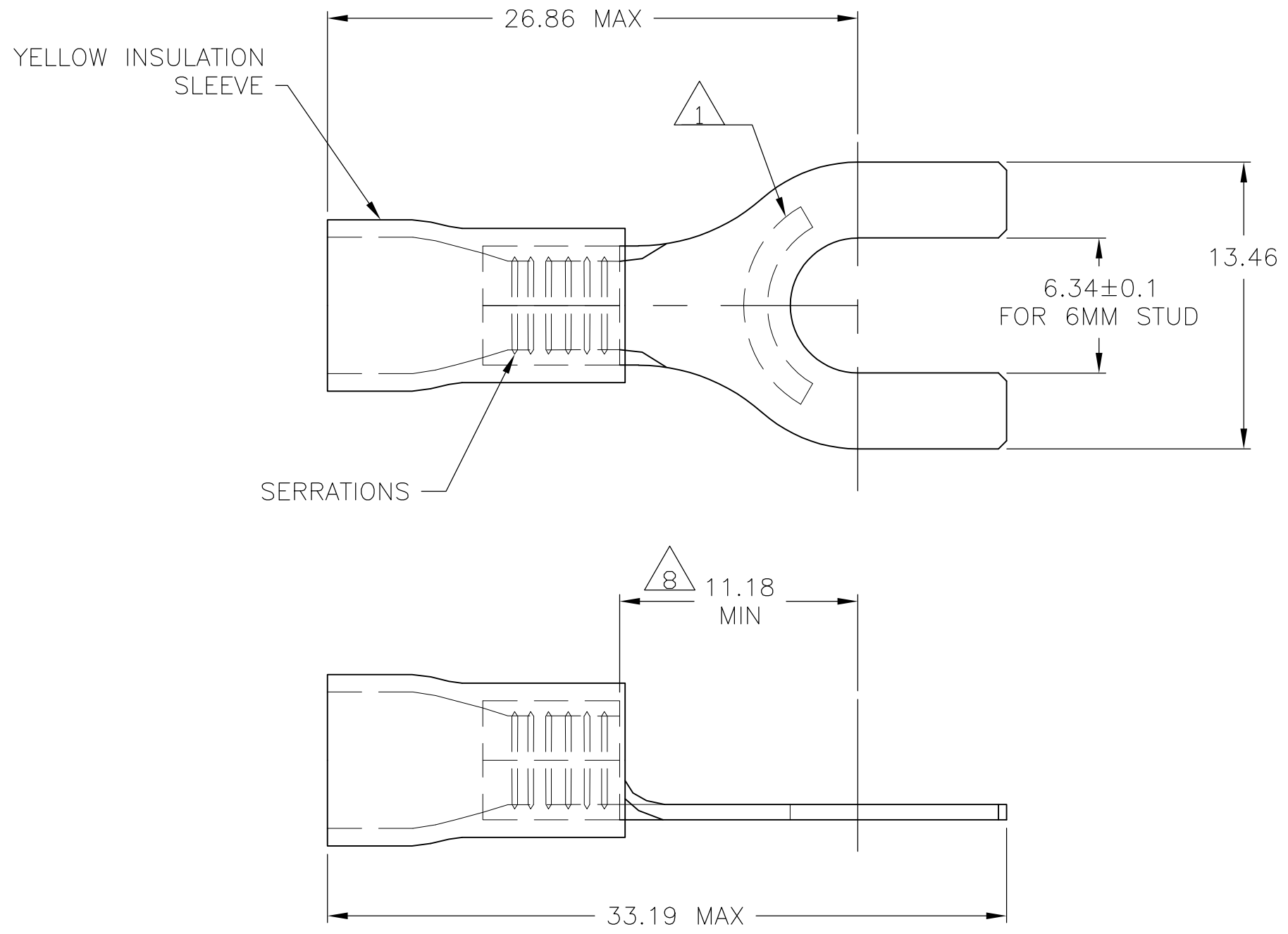


THIS DRAWING IS UNPUBLISHED. RELEASED FOR PUBLICATION
 © COPYRIGHT BY TYCO ELECTRONICS CORPORATION. ALL RIGHTS RESERVED.

| | | | | | | | |
|-----|------|-----------|-----|-----------------------|---------|-----|------|
| LOC | DIST | REVISIONS | | | | | |
| G | 86 | P | LTR | DESCRIPTION | DATE | DWN | APVD |
| | | B | | REV PER ECR 08-028314 | 18NOV08 | JR | TM |



- 1 STAMP "AMP 12-10*", LOCATION APPROX AS SHOWN.
- 2 WIRE INSULATION DIA 3.8-6.4
- 3 OPERATING TEMPERATURE 90°C MAX
- 4 VOLTAGE RATING 600V MAX
- 5 CMA 2.62-6.64mm² [5,180-13,100]
- 6 MATERIAL:
BODY - COPPER PER ASTM B-152
INSULATION - PVC
- 7 FINISH:
BODY - TIN PL PER ASTM B-545
INSULATION - COLOR-YELLOW
- 8 APPLIES FROM EDGE OF METAL WIRE BARREL TO CENTER OF STUD HOLE.
- 9 MATERIAL THICKNESS IS 1.00±0.05

165019
PART NO

| | | | | | | | | |
|--|--|------------------|---------------|-----------|---|-----------|------------|---------------|
| THIS DRAWING IS A CONTROLLED DOCUMENT. | | DWN | JRRUTH | 16JUN2004 | Tyco Electronics Corporation Harrisburg, Pa 17105-3608 | | | |
| DIMENSIONS: mm | | CHK | T MICHIELUTTI | 16JUN04 | | | | |
| TOLERANCES UNLESS OTHERWISE SPECIFIED: 0 PLC ± - 1 PLC ± - 2 PLC ± 0.20 3 PLC ± - 4 PLC ± - ANGLES ± - | | APVD | T MICHIELUTTI | 16JUN04 | NAME | | | |
| MATERIAL | | PRODUCT SPEC | | | RECTANGULAR TONGUE, SPADE TYPE, PLASTI-GRIP | | | |
| FINISH | | APPLICATION SPEC | | | SIZE | CAGE CODE | DRAWING NO | RESTRICTED TO |
| | | WEIGHT | | | A3 | 00779 | C-165019 | - |
| CUSTOMER DRAWING | | | | | SCALE | 4:1 | SHEET | 1 OF 1 |
| | | | | | REV B | | | |