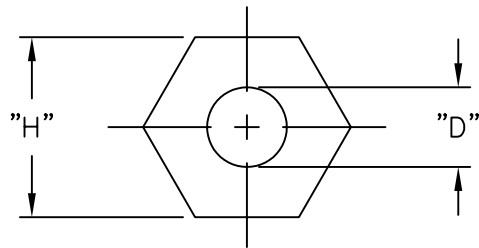
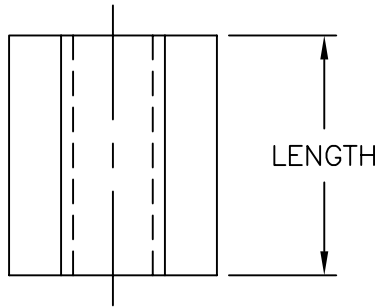


LENGTH	THREAD SIZE 6-32 H: 1/4 (6.4)	THREAD SIZE 8-32 H: 1/4 (6.4)	THREAD SIZE 10-32 H: 3/8 (9.5)
1/4 (6.4)	TBRHS6-2	TBRHS8-2	TBRHS10-2
3/8 (9.5)	TBRHS6-3	TBRHS8-3	TBRHS10-3
1/2 (12.7)	TBRHS6-4	TBRHS8-4	TBRHS10-4
5/8 (15.9)	TBRHS6-5	TBRHS8-5	TBRHS10-5
3/4 (19.1)	TBRHS6-6	TBRHS8-6	TBRHS10-6
1 (25.4)	TBRHS6-8	TBRHS8-8	TBRHS10-8



NOTES:

- MAT'L: BRASS; ZINC (CLEAR CHROMATE) FINISH

<table border="1"> <tr> <td>A</td> <td>CHANGED FILE NO. AND TITLE BLOCK</td> <td>SM 05.10.01</td> </tr> <tr> <td>REV</td> <td>DESCRIPTION</td> <td>ENGR DATE</td> </tr> </table>		A	CHANGED FILE NO. AND TITLE BLOCK	SM 05.10.01	REV	DESCRIPTION	ENGR DATE	TITLE: HEX STANDOFF-BRASS					DWG IN IN (MM)	
		A	CHANGED FILE NO. AND TITLE BLOCK	SM 05.10.01										
REV	DESCRIPTION	ENGR DATE												
TOLERANCES UNLESS NOTED .XX=±.010 .XXX=±.005 FRAC=1/64 ANG=1°		FILE # TBRHS MAT'L: SEE NOTES RE: RICHCO, INC.	DWN: P.B. DT: 12-22-95	APP: DT:	FINAL		PART # SEE TABLE	PRINT TYPE CA						
			RICHCO INC. PO BOX 804238, CHICAGO, 60680 (773) 539-4060											