

DO NOT SCALE FROM THIS PRINT

DESIGNED & DIMENSIONED IN MILLIMETERS [INCHES]

RPBU-XX-X-A-XX-XX

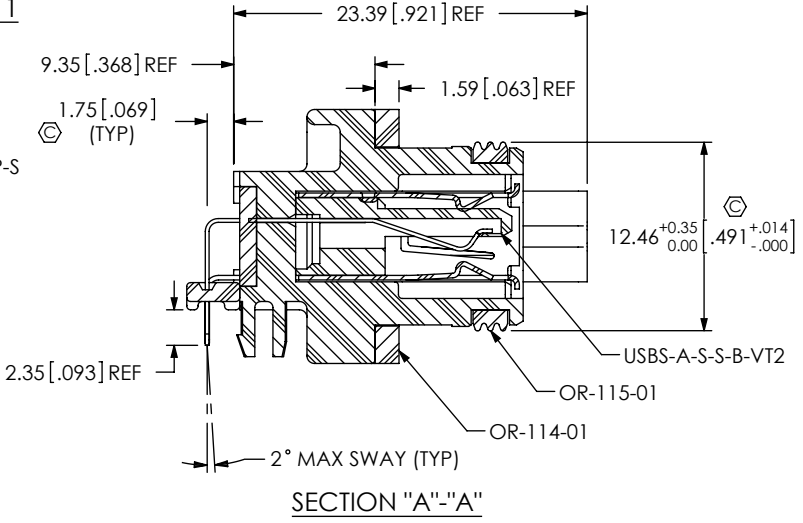
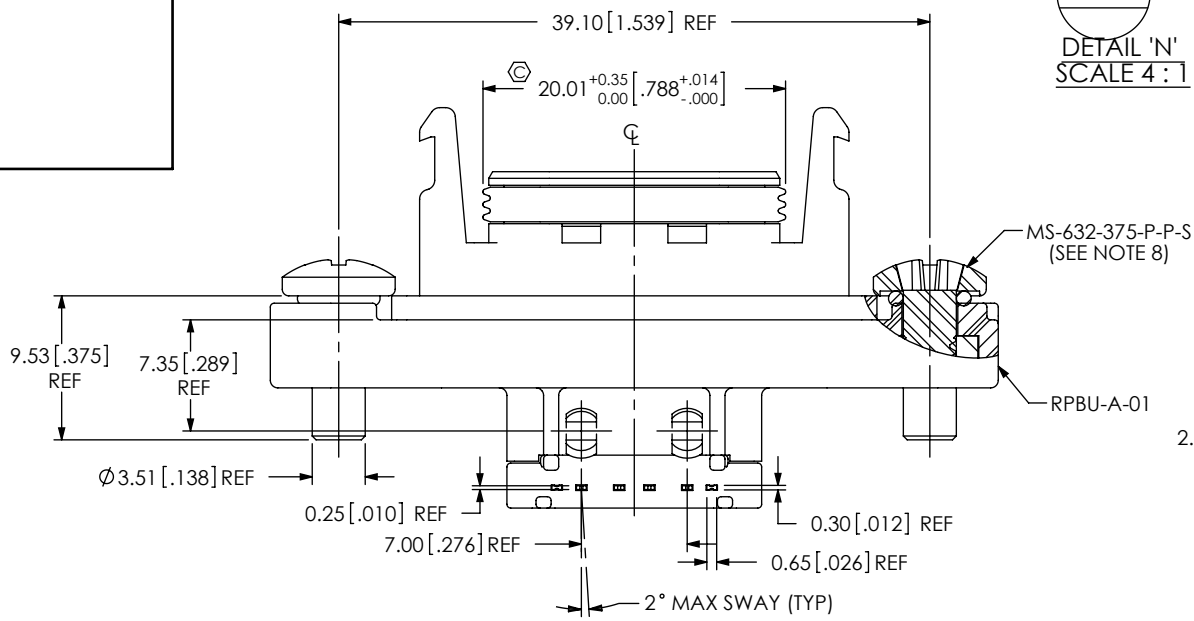
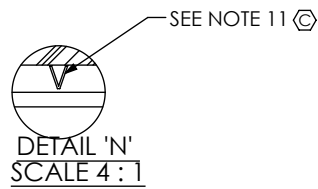
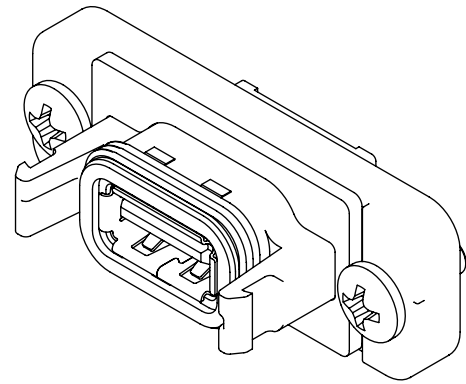
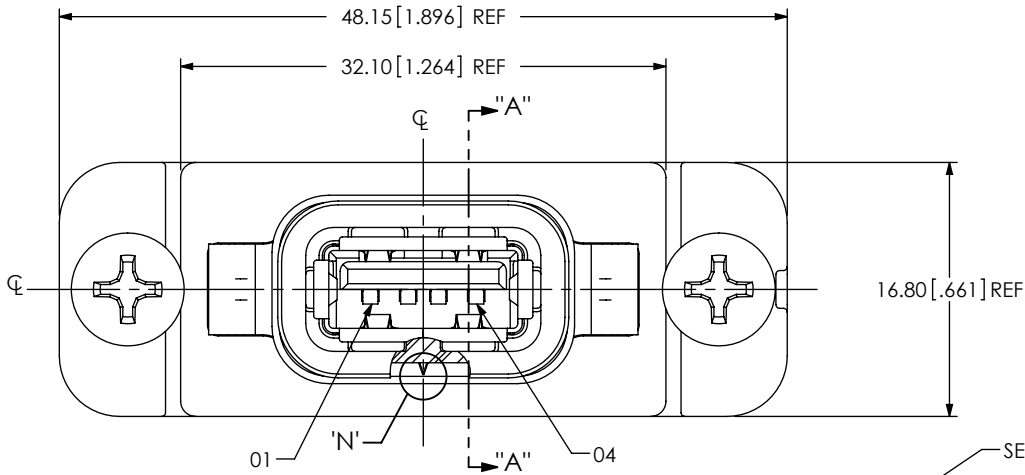
No OF POSITIONS  
-01  
-02

PLATING SPECIFICATION  
-S: SELECTIVE, .000030 GOLD ON POST, TIN ON TAIL

TYPE  
-A

OPTION  
-LC: LOCKING CLIP (AVAILABLE ON -VT ONLY)

TERMINATION  
-RA: RIGHT ANGLE (SHEET 1, FIG 1)  
-VT: VERTICAL THROUGH HOLE (SHEET 2, FIG 2)



NOTES:  
FIG 1  
RPBU-01-X-A-RA SHOWN

1. Ⓢ REPRESENTS A CRITICAL DIMENSION.
2. BURR ALLOWANCE: 0.038[.0015] MAX.
3. MINIMUM PUSHOUT FORCE: 4.4N[1.00 LB].
4. MAXIMUM ALLOWABLE BOW: 0.05[.002] MM/MM AFTER ASSEMBLY.
5. PANEL THICKNESS: 0.76[.030] - 3.96[.156], RECOMMENDED PANEL CUT OUT ON SHEET 2.
6. REQUIRED TORQUE ON MS-632-375-P-P-S: .35±.07 Nm [50±10 IN-OZ].
7. ALL PARTS MUST BE PACKAGED IN TUBES.
8. SEAL O-RING IS INCLUDED IN THE MS-632-375-P-P-S.
9. EPOXY MUST BE FLUSH OR BELOW EDGE OF CAVITY. NO VOIDS IN EPOXY ALLOWED.
10. PARTS TO BE OVEN CURED, AFTER THE EPOXY IS FILLED, AT 200°C FOR 10 MINUTES.
11. OR-115-XX POSITION INDICATOR.

UNLESS OTHERWISE SPECIFIED, DIMENSIONS ARE IN MILLIMETERS. TOLERANCES ARE:  
DECIMALS ANGLES  
X.X: ±0.3 [.01] 2°  
X.XX: ±0.13 [.005]  
X.XXX: ±0.051 [.0020]

PROPRIETARY NOTE  
THIS DOCUMENT CONTAINS INFORMATION CONFIDENTIAL AND PROPRIETARY TO SAMTEC, INC. AND SHALL NOT BE REPRODUCED OR TRANSFERRED TO OTHER DOCUMENTS OR DISCLOSED TO OTHERS OR USED FOR ANY PURPOSE OTHER THAN THAT WHICH IT WAS OBTAINED WITHOUT THE EXPRESSED WRITTEN CONSENT OF SAMTEC, INC.



520 PARK EAST BLVD., NEW ALBANY, IN 47150  
PHONE: 812-944-6733 FAX: 812-948-5047  
e-Mail info@SAMTEC.com code 53322

MATERIAL: DO NOT SCALE DRAWING SHEET SCALE: 2:1  
INSULATOR: LCP UL94V0, COLOR: BLACK  
CONTACT: PHOS BRONZE  
SHIELD: PHOS BRONZE  
SEAL: SILICON  
SCREW: STAINLESS STEEL  
NUT: STAINLESS STEEL

DESCRIPTION:  
RECTANGULAR PANEL BOARD MOUNT USB- A

DWG. NO. RPBU-XX-X-A-XX-XX

BY: T NEWTON 02/12/2010 SHEET 1 OF 10

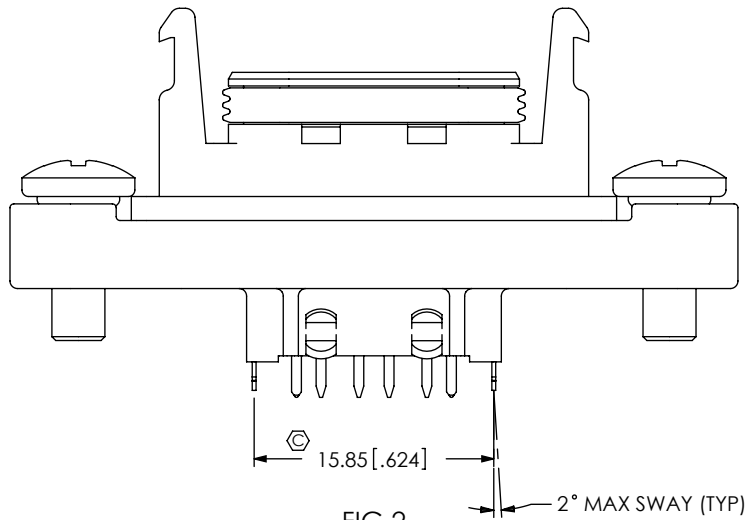
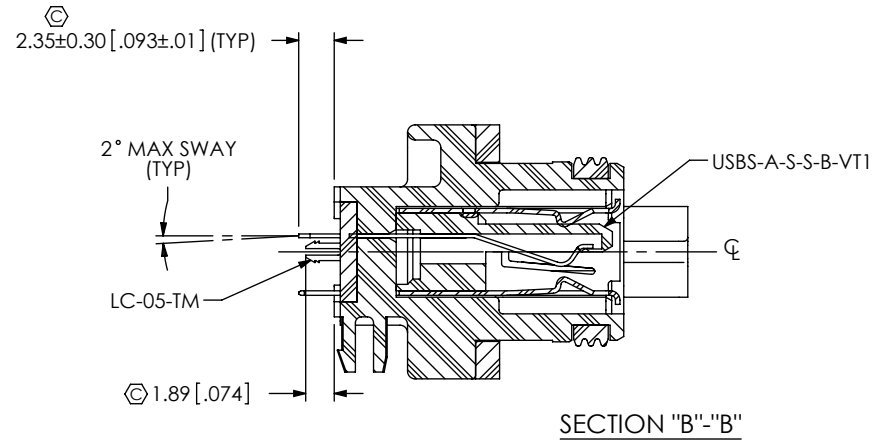
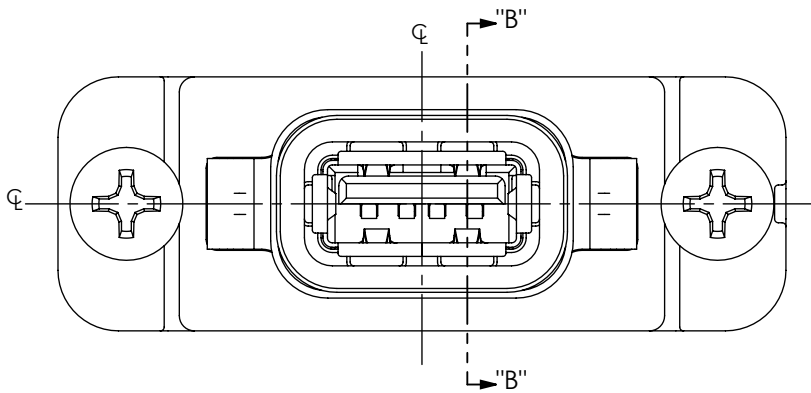


FIG 2  
RPBU-01-X-A-VT-LC SHOWN  
(SAME AS FIG 1, EXCEPT AS SHOWN)

RECOMMENDED PANEL CUT OUT  
(SEE NOTE 5)

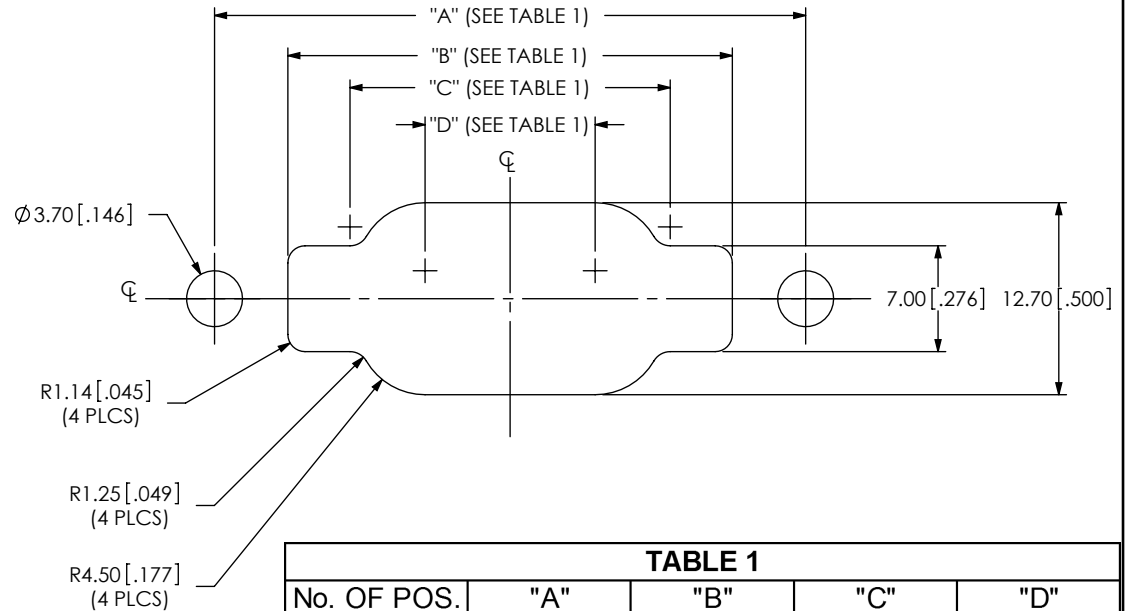


TABLE 1				
No. OF POS.	"A"	"B"	"C"	"D"
-01	39.10[1.54]	29.40[1.16]	21.18[0.83]	11.25[0.44]
-02	60.75[2.39]	51.05[2.01]	42.83[1.69]	32.90[1.30]

PROPRIETARY NOTE  
THIS DOCUMENT CONTAINS INFORMATION  
CONFIDENTIAL AND PROPRIETARY TO  
SAMTEC, INC. AND SHALL NOT BE REPRODUCED  
OR TRANSFERRED TO OTHER DOCUMENTS OR  
DISCLOSED TO OTHERS OR USED FOR ANY  
PURPOSE OTHER THAN THAT WHICH IT WAS  
OBTAINED WITHOUT THE EXPRESSED WRITTEN  
CONSENT OF SAMTEC, INC.

DO NOT SCALE DRAWING

SHEET SCALE: 2:1



520 PARK EAST BLVD, NEW ALBANY, IN 47150  
PHONE: 812-944-6733 FAX: 812-948-5047  
e-Mail: info@SAMTEC.com code 55322

DESCRIPTION:  
RECTANGULAR PANEL BOARD MOUNT USB- A

DWG. NO.  
RPBU-XX-X-A-XX-XX

BY: T NEWTON 02/12/2010 SHEET 2 OF 10

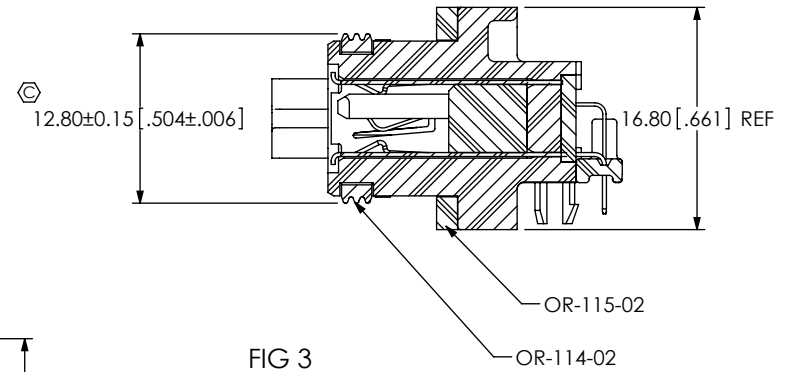
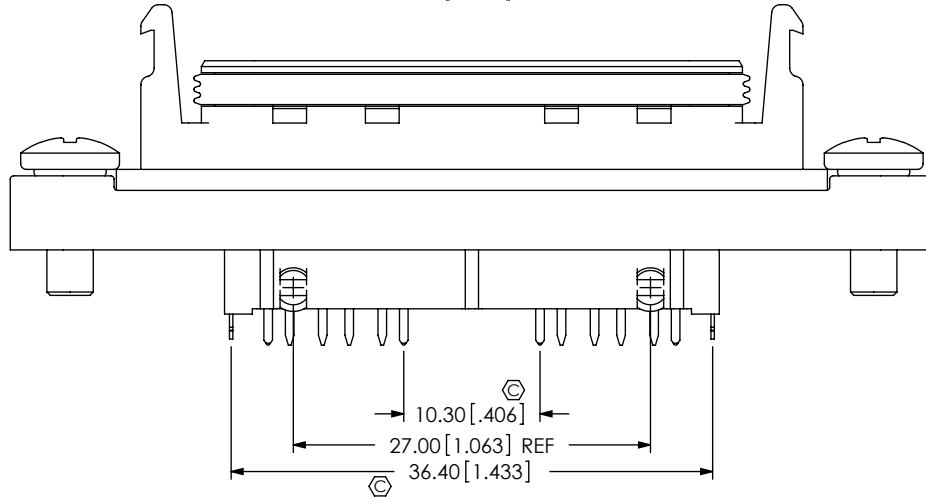
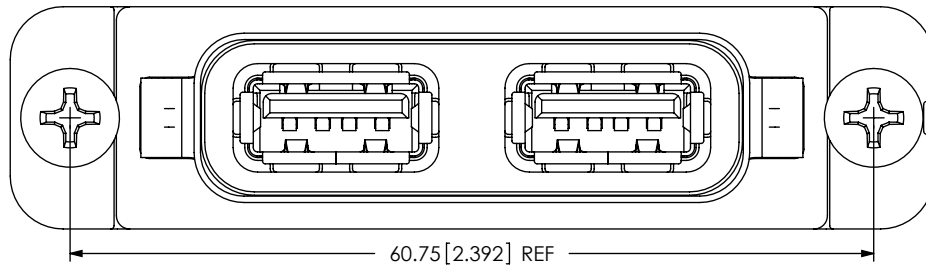
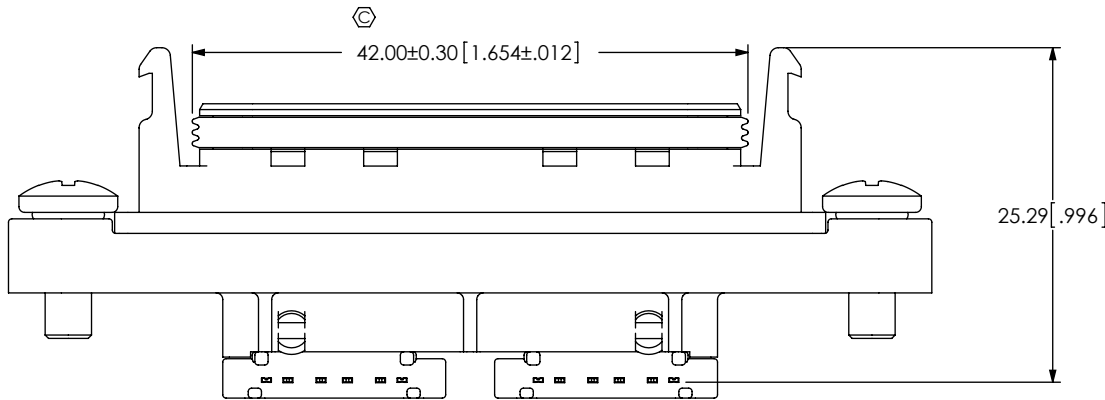
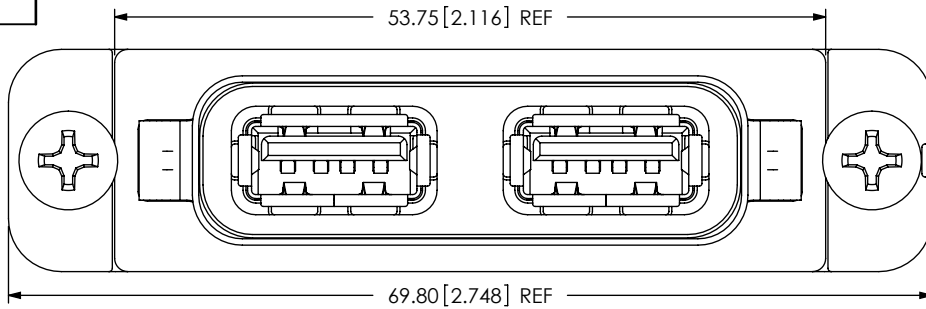


FIG 3  
RPBU-02-X-A-RA SHOWN  
(SAME AS FIG 1, EXCEPT AS SHOWN)

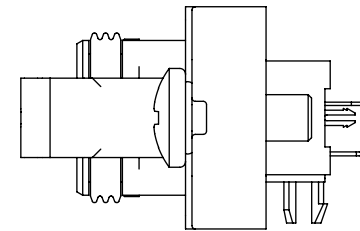


FIG 4  
RPBU-02-X-A-VT-LC SHOWN  
(SAME AS FIG 2, EXCEPT AS SHOWN)

PROPRIETARY NOTE  
THIS DOCUMENT CONTAINS INFORMATION  
CONFIDENTIAL AND PROPRIETARY TO  
SAMTEC, INC. AND SHALL NOT BE REPRODUCED  
OR TRANSFERRED TO OTHER DOCUMENTS OR  
DISCLOSED TO OTHERS OR USED FOR ANY  
PURPOSE OTHER THAN THAT WHICH IT WAS  
OBTAINED WITHOUT THE EXPRESSED WRITTEN  
CONSENT OF SAMTEC, INC.

DO NOT SCALE DRAWING

SHEET SCALE: 7:4

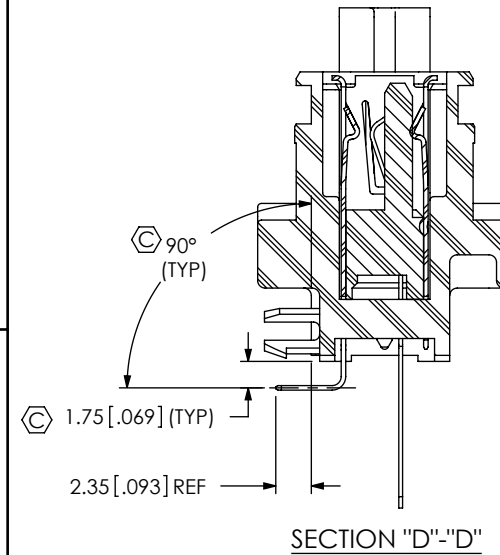
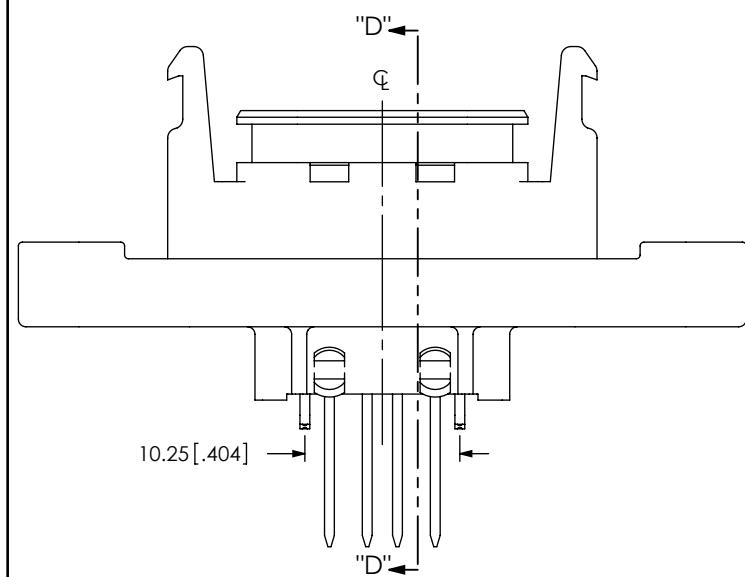
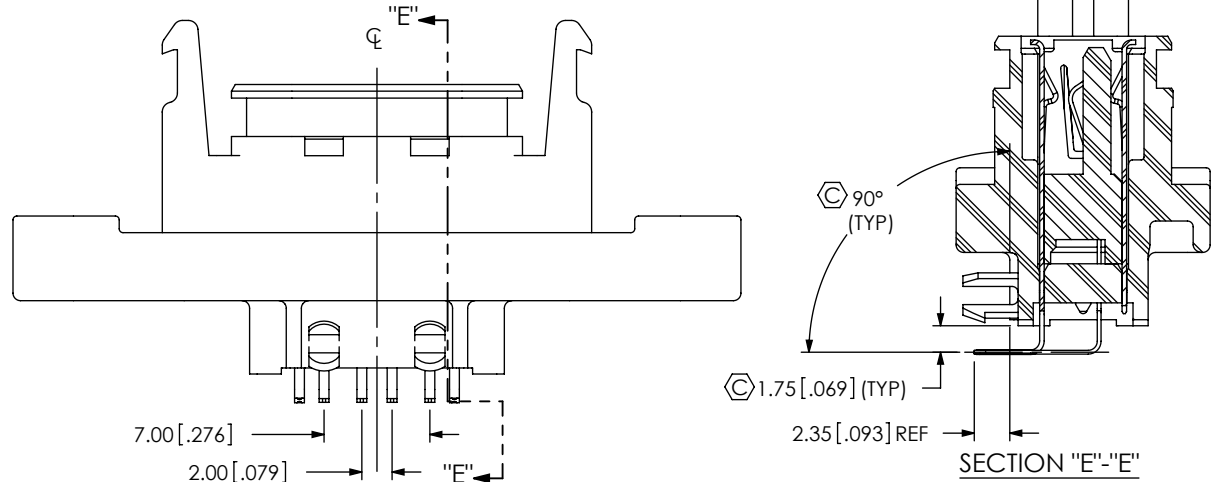
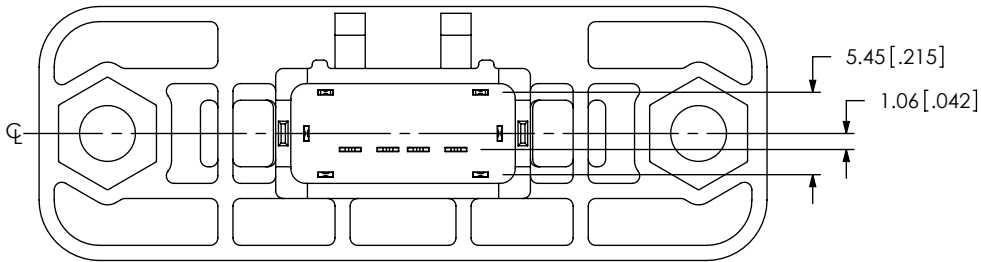
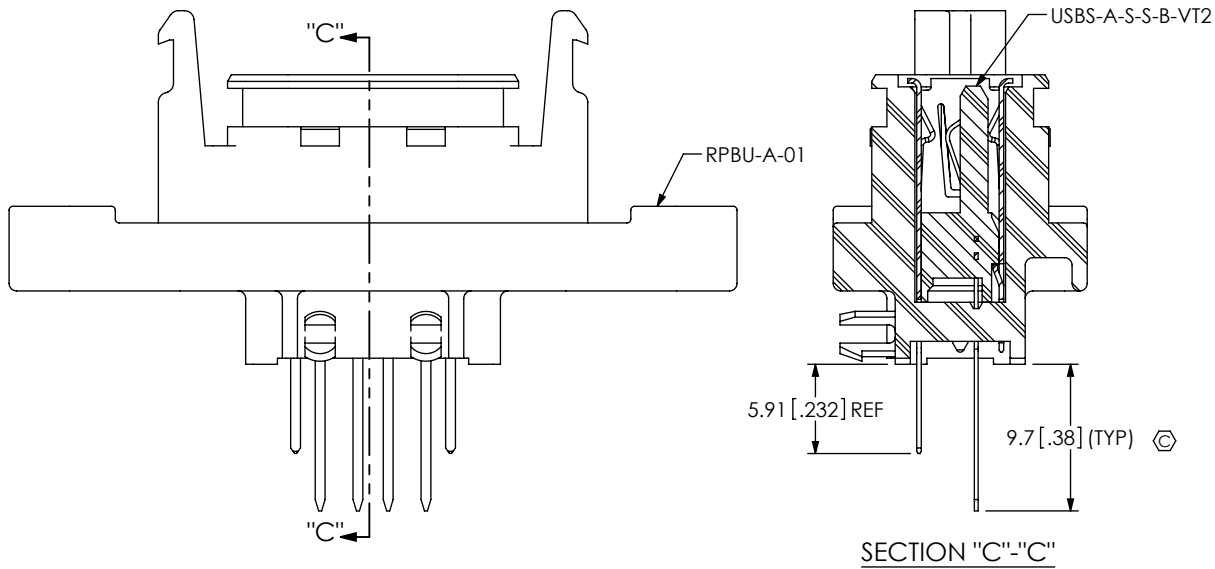
**samtec**

520 PARK EAST BLVD, NEW ALBANY, IN 47150  
PHONE: 812-944-6733 FAX: 812-948-5047  
e-Mail info@SAMTEC.com code 55322

DESCRIPTION:  
RECTANGULAR PANEL BOARD MOUNT USB- A

DWG. NO.  
RPBU-XX-X-A-XX-XX

BY: T NEWTON 02/12/2010 SHEET 3 OF 10



PROPRIETARY NOTE  
THIS DOCUMENT CONTAINS INFORMATION  
CONFIDENTIAL AND PROPRIETARY TO  
SAMTEC, INC. AND SHALL NOT BE REPRODUCED  
OR TRANSFERRED TO OTHER DOCUMENTS OR  
DISCLOSED TO OTHERS OR USED FOR ANY  
PURPOSE OTHER THAN THAT WHICH IT WAS  
OBTAINED WITHOUT THE EXPRESSED WRITTEN  
CONSENT OF SAMTEC, INC.

DO NOT SCALE DRAWING

SHEET SCALE: 2:1



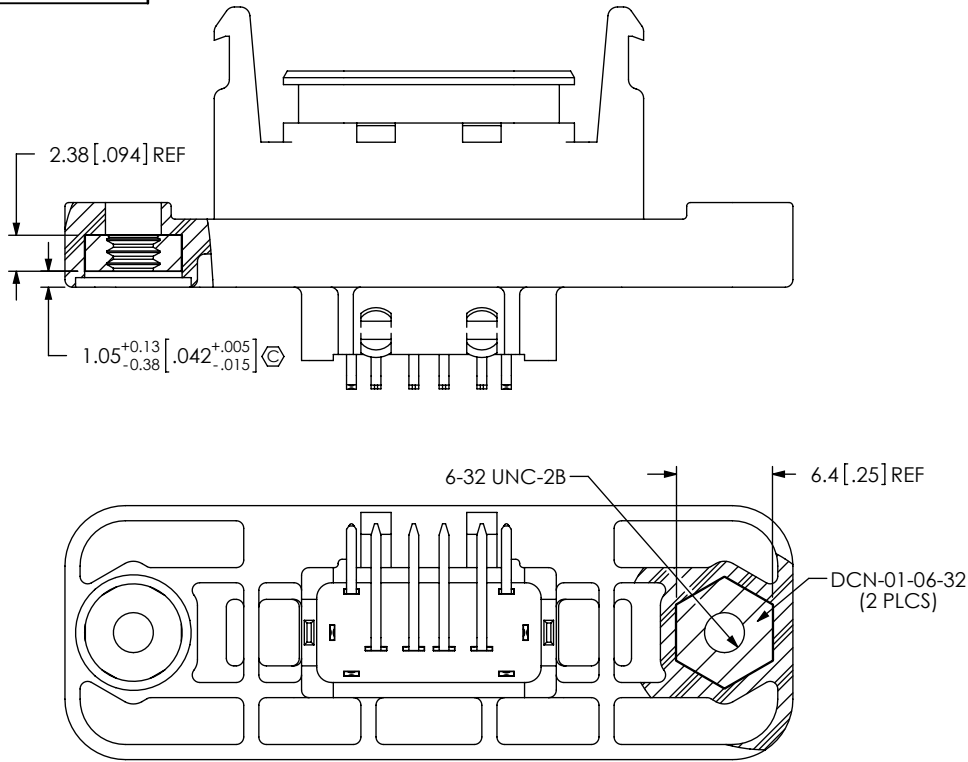
520 PARK EAST BLVD, NEW ALBANY, IN 47150  
PHONE: 812-944-6733 FAX: 812-948-5047  
e-Mail: info@SAMTEC.com code: 55322

DESCRIPTION:  
RECTANGULAR PANEL BOARD MOUNT USB- A

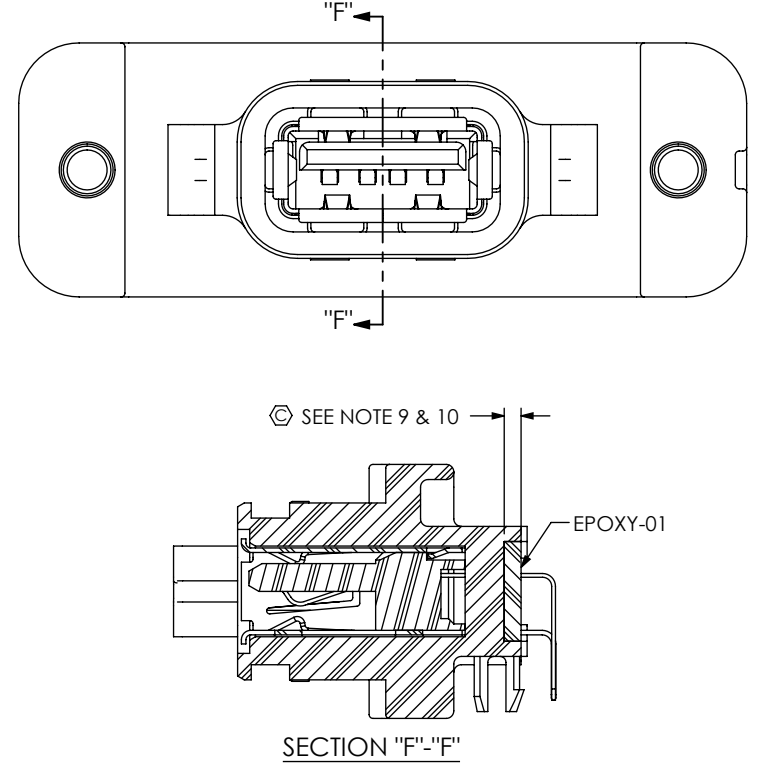
DWG. NO.  
RPBU-XX-X-A-XX-XX

BY: T NEWTON 02/12/2010 SHEET 4 OF 10

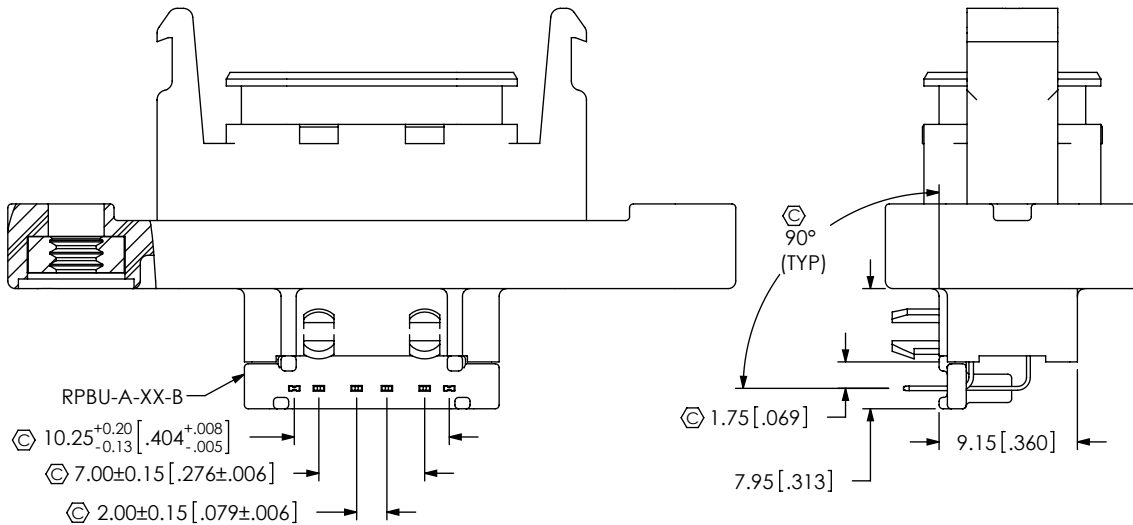
-01 RA: IN-PROCESS 4  
FILL DCN-01-06-32 & HEAT STAKE




-01 RA: IN-PROCESS 5  
FILL EPOXY-01



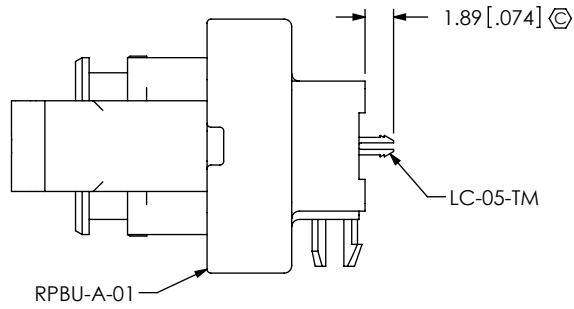
-01 RA: IN-PROCESS 6  
FILL RPBU-A-XX-B



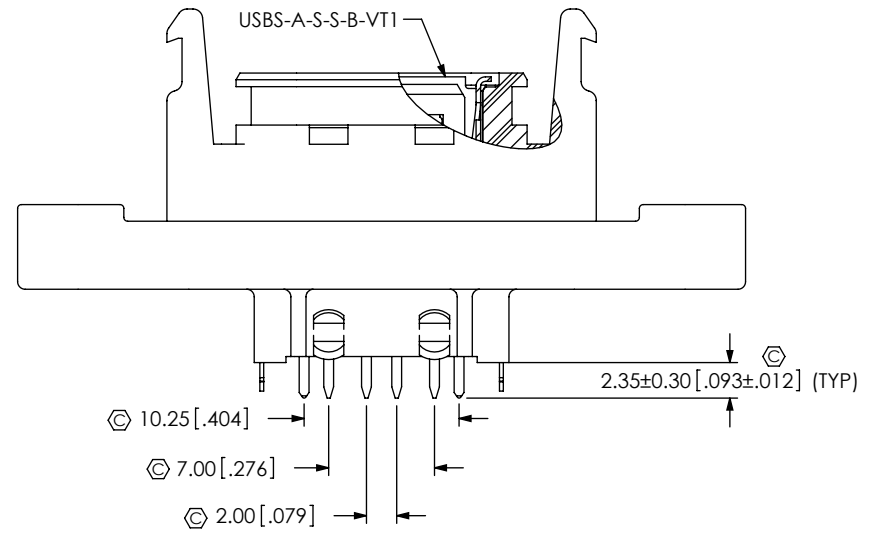
<p>PROPRIETARY NOTE</p> <p>THIS DOCUMENT CONTAINS INFORMATION CONFIDENTIAL AND PROPRIETARY TO SAMTEC, INC. AND SHALL NOT BE REPRODUCED OR TRANSFERRED TO OTHER DOCUMENTS OR DISCLOSED TO OTHERS OR USED FOR ANY PURPOSE OTHER THAN THAT WHICH IT WAS OBTAINED WITHOUT THE EXPRESSED WRITTEN CONSENT OF SAMTEC, INC.</p> <p>DO NOT SCALE DRAWING</p> <p>SHEET SCALE: 2:1</p>		
	<p>520 PARK EAST BLVD, NEW ALBANY, IN 47150 PHONE: 812-944-6733 FAX: 812-948-5047 e-Mail info@SAMTEC.com code 55322</p>	
	<p>DESCRIPTION: RECTANGULAR PANEL BOARD MOUNT USB- A</p>	
	<p>DWG. NO. <b>RPBU-XX-X-A-XX-XX</b></p>	
<p>BY: T NEWTON 02/12/2010</p>		<p>SHEET 5 OF 10</p>

REVISION F

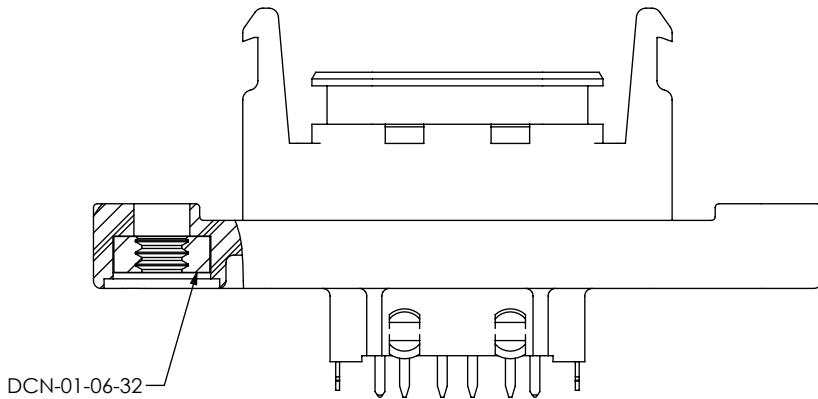
-01 VT: IN-PROCESS 1  
FILL LC-05-TM



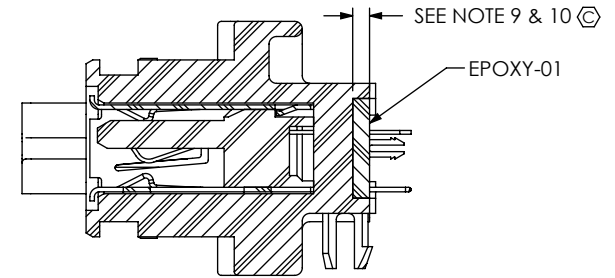
-01 VT: IN-PROCESS 2  
FILL USBS-A-S-S-B-VT1  
(SAME AS -01RA: IN-PROCESS 1, EXCEPT AS SHOWN)



-01 VT: IN-PROCESS 3  
FILL DCN-01-06-32 & HEAT STAKE  
(SAME AS -01 RA: IN-PROCESS 4, EXCEPT AS SHOWN)



-01 VT: IN-PROCESS 4  
FILL EPOXY-01  
(SAME AS -01 RA: IN-PROCESS 5, EXCEPT AS SHOWN)



F:\DWG\MISC\MKTG\RPBU-XX-X-A-XX-XX-MKT.SLDDRW

PROPRIETARY NOTE

THIS DOCUMENT CONTAINS INFORMATION CONFIDENTIAL AND PROPRIETARY TO SAMTEC, INC. AND SHALL NOT BE REPRODUCED OR TRANSFERRED TO OTHER DOCUMENTS OR DISCLOSED TO OTHERS OR USED FOR ANY PURPOSE OTHER THAN THAT WHICH IT WAS OBTAINED WITHOUT THE EXPRESSED WRITTEN CONSENT OF SAMTEC, INC.

DO NOT SCALE DRAWING

SHEET SCALE: 2:1

**samtec**

520 PARK EAST BLVD, NEW ALBANY, IN 47150  
PHONE: 812-944-6733 FAX: 812-948-5047  
e-Mail info@SAMTEC.com code 55322

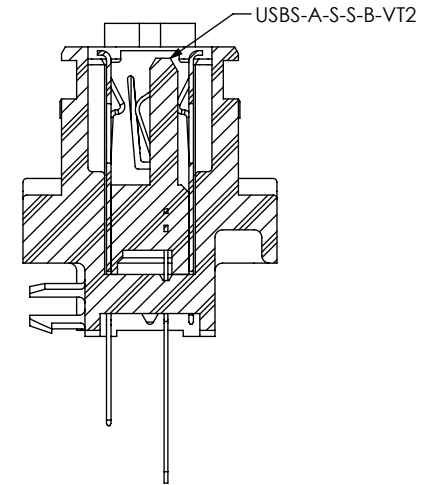
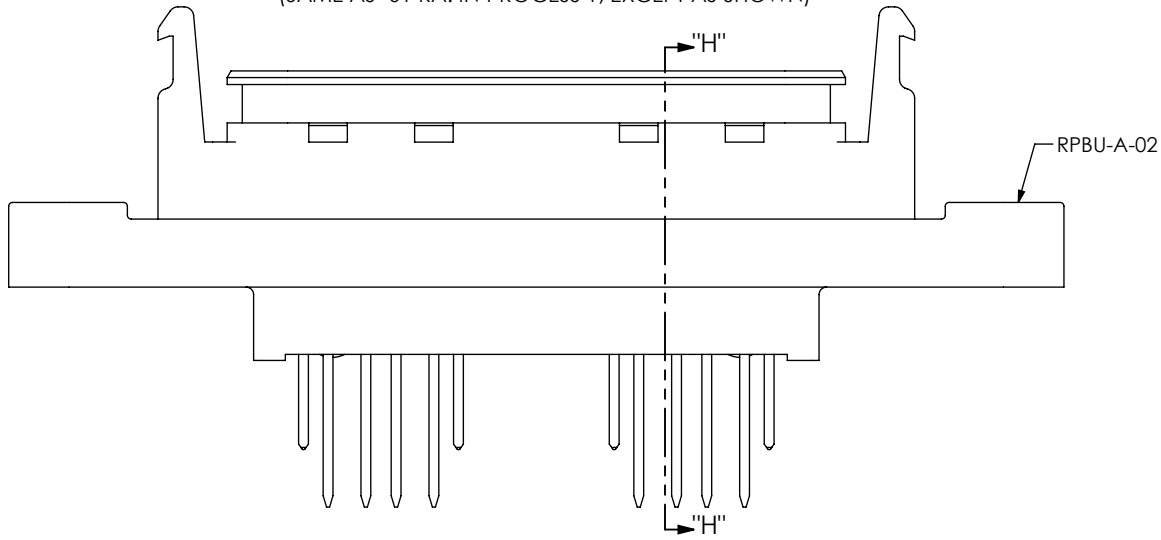
DESCRIPTION:  
RECTANGULAR PANEL BOARD MOUNT USB- A

DWG. NO.  
RPBU-XX-X-A-XX-XX

BY: T NEWTON 02/12/2010 SHEET 6 OF 10

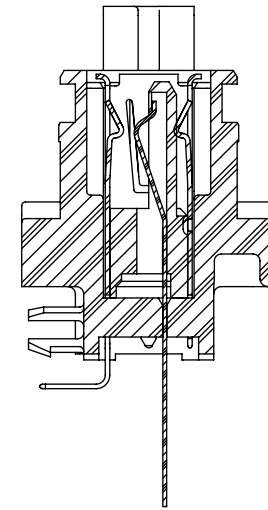
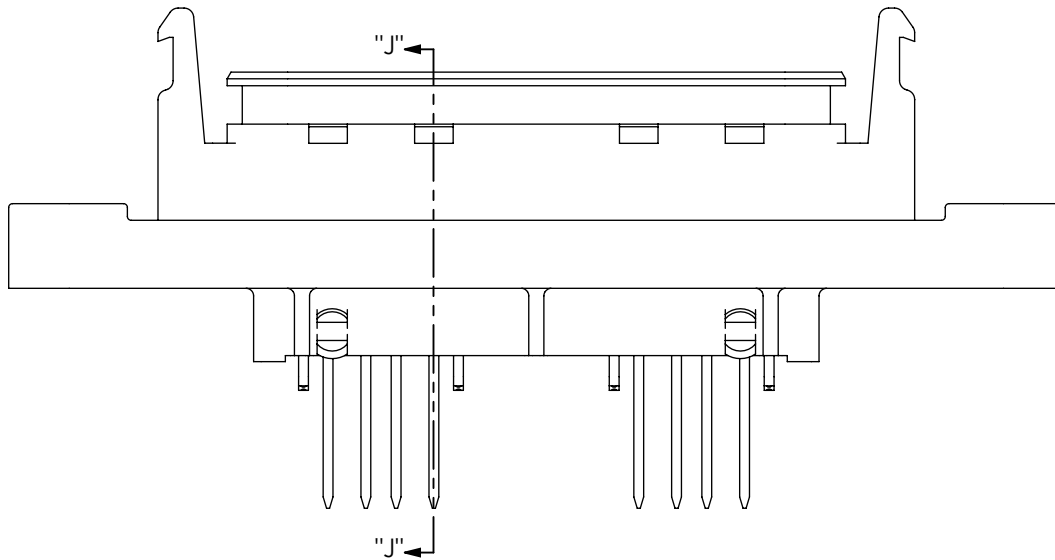
REVISION F

-02 RA: IN-PROCESS 1  
FILL USBS-A-S-S-B-VT2  
(SAME AS -01 RA: IN-PROCESS 1, EXCEPT AS SHOWN)



SECTION "H"-"H"

-02 RA: IN-PROCESS 2  
FORM SHIELD TAILS ON USBS-A-S-S-B-VT2  
(SAME AS -01 RA: IN-PROCESS 2, EXCEPT AS SHOWN)



SECTION "J"-"J"

**PROPRIETARY NOTE**

THIS DOCUMENT CONTAINS INFORMATION  
CONFIDENTIAL AND PROPRIETARY TO  
SAMTEC, INC. AND SHALL NOT BE REPRODUCED  
OR TRANSFERRED TO OTHER DOCUMENTS OR  
DISCLOSED TO OTHERS OR USED FOR ANY  
PURPOSE OTHER THAN THAT WHICH IT WAS  
OBTAINED WITHOUT THE EXPRESSED WRITTEN  
CONSENT OF SAMTEC, INC.

DO NOT SCALE DRAWING

SHEET SCALE: 2:1

**samtec**

520 PARK EAST BLVD, NEW ALBANY, IN 47150  
PHONE: 812-944-6733 FAX: 812-948-5047  
e-Mail info@SAMTEC.com code 55322

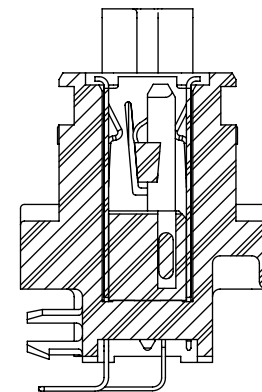
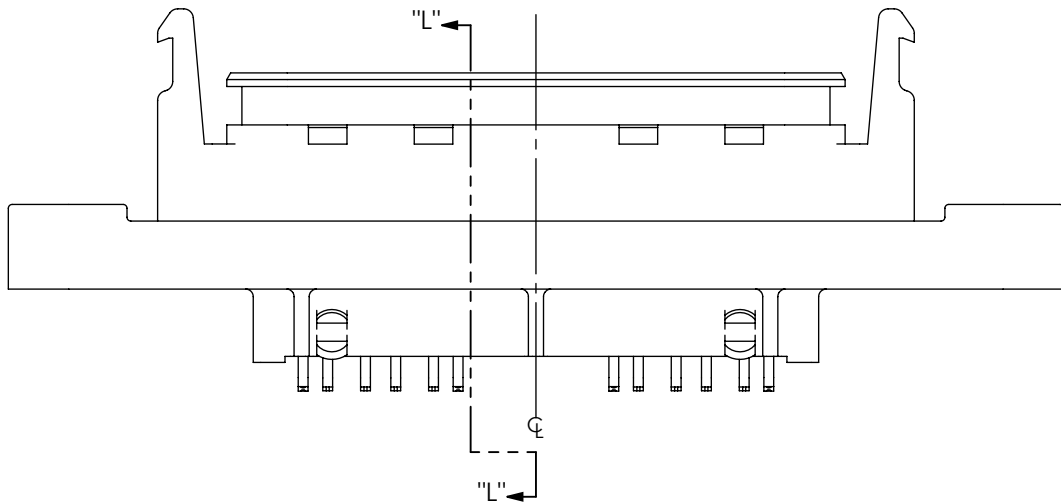
DESCRIPTION:  
RECTANGULAR PANEL BOARD MOUNT USB- A

DWG. NO.  
RPBU-XX-X-A-XX-XX

BY: T NEWTON 02/12/2010 SHEET 7 OF 10

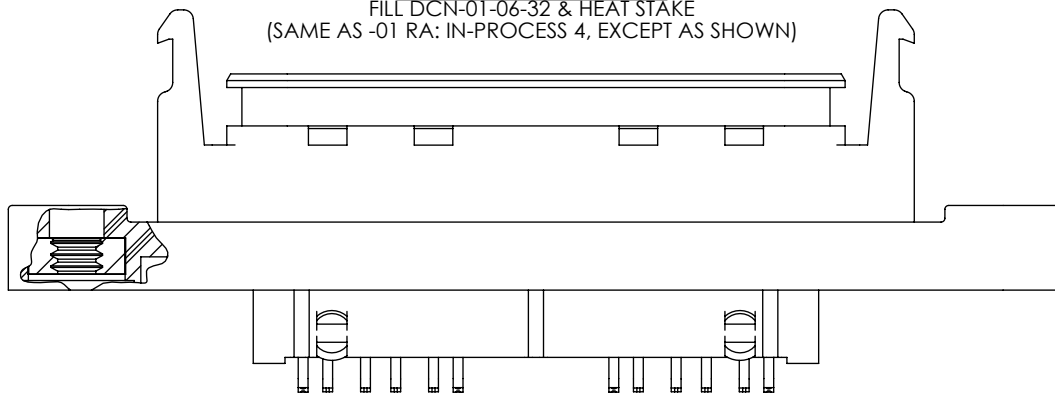
REVISION F

-02 RA: IN-PROCESS 3  
FORM CONTACT TAILS ON USB5-A-S-S-B-VT2  
(SAME AS -01 RA: IN-PROCESS 3, EXCEPT AS SHOWN)

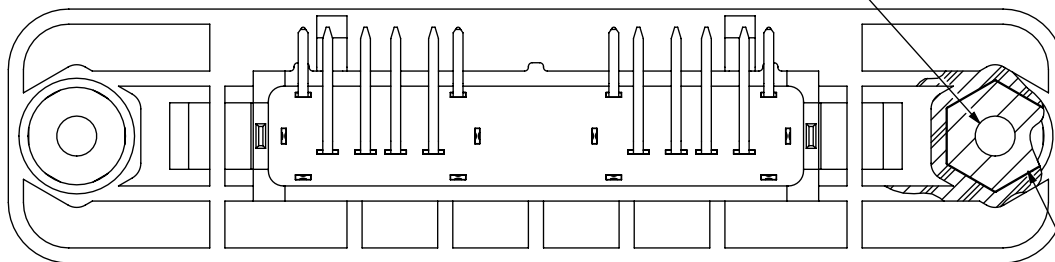


SECTION "L"- "L"

-02 RA: IN-PROCESS 4  
FILL DCN-01-06-32 & HEAT STAKE  
(SAME AS -01 RA: IN-PROCESS 4, EXCEPT AS SHOWN)



6-32 UNC-2B



DCN-01-06-32  
( 2 PLCS)

PROPRIETARY NOTE  
THIS DOCUMENT CONTAINS INFORMATION  
CONFIDENTIAL AND PROPRIETARY TO  
SAMTEC, INC. AND SHALL NOT BE REPRODUCED  
OR TRANSFERRED TO OTHER DOCUMENTS OR  
DISCLOSED TO OTHERS OR USED FOR ANY  
PURPOSE OTHER THAN THAT WHICH IT WAS  
OBTAINED WITHOUT THE EXPRESSED WRITTEN  
CONSENT OF SAMTEC, INC.

DO NOT SCALE DRAWING

SHEET SCALE: 2:1

**samtec**

520 PARK EAST BLVD, NEW ALBANY, IN 47150  
PHONE: 812-944-6733 FAX: 812-948-5047  
e-Mail info@SAMTEC.com code 55322

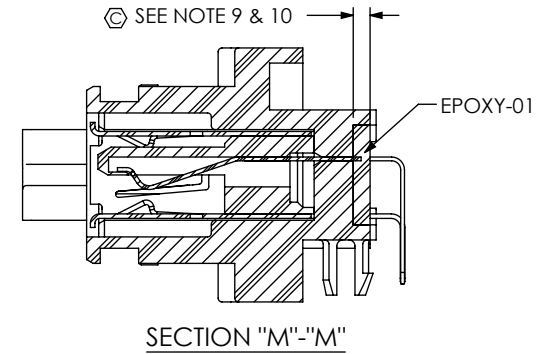
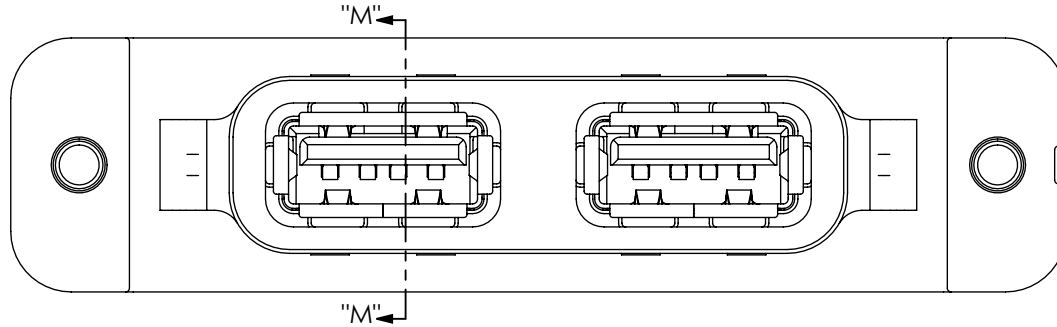
DESCRIPTION:  
RECTANGULAR PANEL BOARD MOUNT USB- A

DWG. NO.  
RPBU-XX-X-A-XX-XX

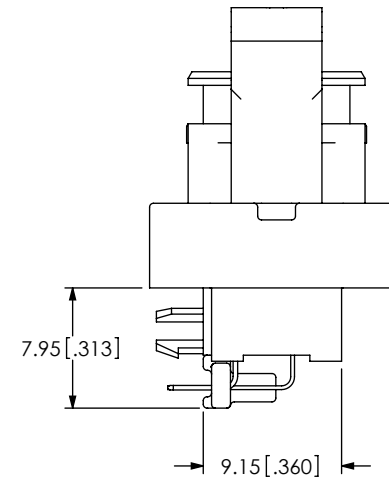
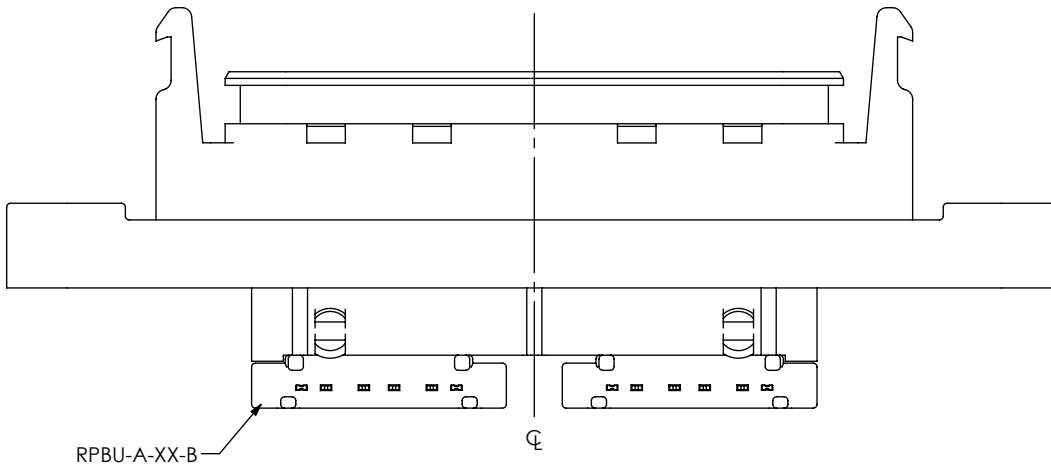
BY: T NEWTON 02/12/2010 SHEET 8 OF 10



-02 RA: IN-PROCESS 5  
 FILL EPOXY-01  
 (SAME AS -01 RA: IN-PROCESS 5, EXCEPT AS SHOWN)



-02 RA: IN-PROCESS 6  
 FILL RPBU-A-XX-B  
 (SAME AS -01 RA: IN-PROCESS 6, EXCEPT AS SHOWN)



**PROPRIETARY NOTE**  
 THIS DOCUMENT CONTAINS INFORMATION  
 CONFIDENTIAL AND PROPRIETARY TO  
 SAMTEC, INC. AND SHALL NOT BE REPRODUCED  
 OR TRANSFERRED TO OTHER DOCUMENTS OR  
 DISCLOSED TO OTHERS OR USED FOR ANY  
 PURPOSE OTHER THAN THAT WHICH IT WAS  
 OBTAINED WITHOUT THE EXPRESSED WRITTEN  
 CONSENT OF SAMTEC, INC.

DO NOT SCALE DRAWING

SHEET SCALE: 2:1

**samtec**

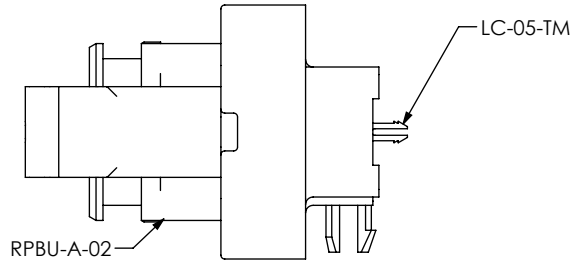
520 PARK EAST BLVD, NEW ALBANY, IN 47150  
 PHONE: 812-944-6733 FAX: 812-948-5047  
 e-Mail: info@SAMTEC.com code 55322

DESCRIPTION:  
 RECTANGULAR PANEL BOARD MOUNT USB- A

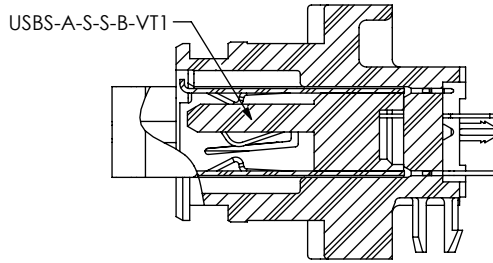
DWG. NO.  
 RPBU-XX-X-A-XX-XX

BY: T NEWTON 02/12/2010 SHEET 9 OF 10

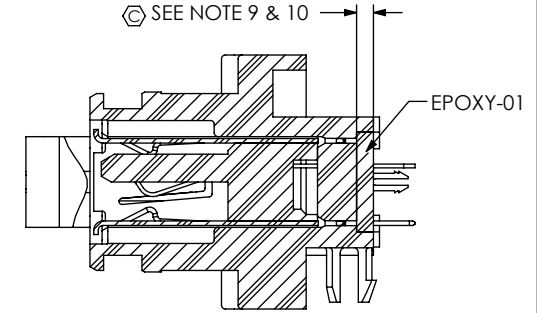
-02 VT: IN-PROCESS 1  
 FILL LC-05-TM  
 (SAME AS -01 VT: IN-PROCESS 1)



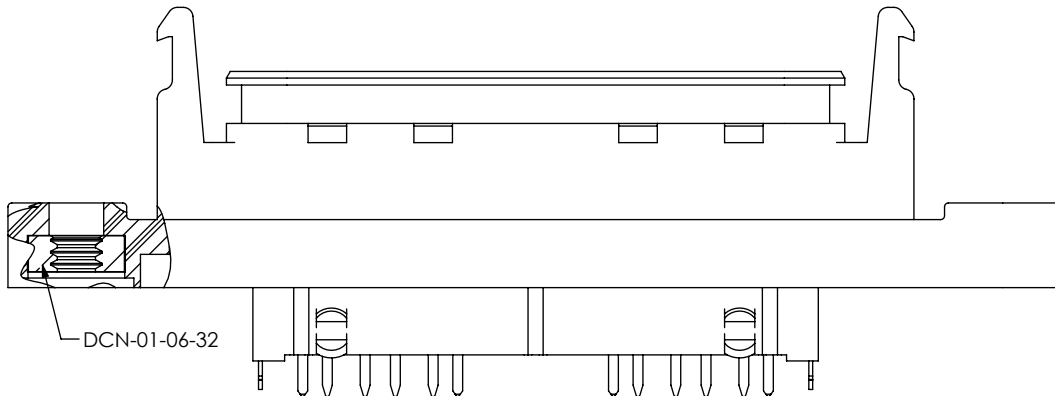
-02 VT: IN-PROCESS 2  
 FILL USBS-A-S-S-B-VT1  
 (SAME AS -02 RA: IN-PROCESS 1, EXCEPT AS SHOWN)



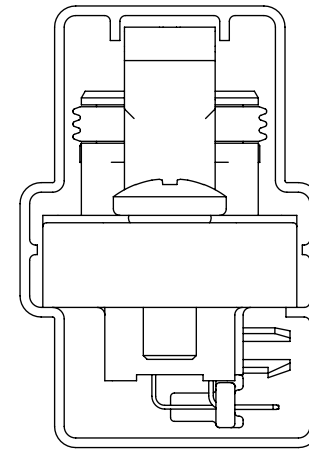
-02 VT: IN-PROCESS 4  
 FILL EPOXY-01  
 (SAME AS -02 RA: IN-PROCESS 5, EXCEPT AS SHOWN)



-02 VT: IN-PROCESS 3  
 FILL DCN-01-06-32 & HEAT STAKE  
 (SAME AS -02 RA: IN-PROCESS 4, EXCEPT AS SHOWN)



PACKAGING VIEW  
 (SEE NOTE 7)



TUBE: PT-RPBU001  
 PLUG: TP-31

**PROPRIETARY NOTE**  
 THIS DOCUMENT CONTAINS INFORMATION  
 CONFIDENTIAL AND PROPRIETARY TO  
 SAMTEC, INC. AND SHALL NOT BE REPRODUCED  
 OR TRANSFERRED TO OTHER DOCUMENTS OR  
 DISCLOSED TO OTHERS OR USED FOR ANY  
 PURPOSE OTHER THAN THAT WHICH IT WAS  
 OBTAINED WITHOUT THE EXPRESSED WRITTEN  
 CONSENT OF SAMTEC, INC.

DO NOT SCALE DRAWING

SHEET SCALE: 2:1

**samtec**

520 PARK EAST BLVD, NEW ALBANY, IN 47150  
 PHONE: 812-944-6733 FAX: 812-948-5047  
 e-Mail info@SAMTEC.com code 55322

DESCRIPTION:  
 RECTANGULAR PANEL BOARD MOUNT USB- A

DWG. NO.  
**RPBU-XX-X-A-XX-XX**

BY: T NEWTON 02/12/2010 SHEET 10 OF 10