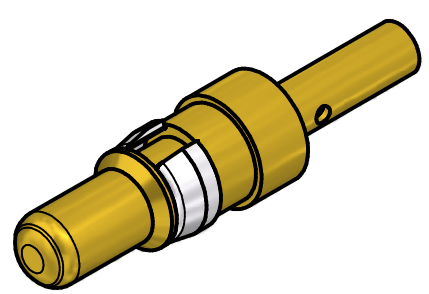


STRIPPING DIMENSIONS



NOTES:

- 1. MATERIAL: COPPER ALLOY
- 2. PLATING:
 - (b) ITEM 1+2: GOLD FLASH over NICKEL
 - ITEM 3: NICKEL PLATED
- 3. CRIMPING: USE CRIMP TOOL 360X10409X
 WITH TOOL INSERT 360X20029X
 SELECTOR SETTINGS: 3 FOR AWG 16
 2 FOR AWG 18
 2 FOR AWG 20

Directive 2002/95/EC RoHS compliant

(b)

THIS DRAWING MAY NOT BE COPIED OR REPRODUCED IN ANY WAY, AND MAY NOT BE PASSED ON TO A THIRD PARTY WITHOUT WRITTEN PERMISSION. OWNERSHIP AND COPYRIGHT OF CONEC GmbH

DO NOT ALTER CAD DRAWING BY HAND

finish: see notes				tolerance ISO 2768-m		dim. in mm	
				date	name		
				drawn	25.07.06	Lehmenkühler	
				appd.	26.07.06	Kühle	
				norm			
				d-old			
2 x b	Ä3854	19.01.2011	K.H.	CONEC ®			
a	Origin						
rev.	description	date	name				

scale: 5:1	
material: see notes	
title: HIGH POWER CONTACT MALE CRIMP VERSION 10A D-SUB COMBINATION	
dwg no: Inventor 10	DIN-A4
13K1A1834	
part no: 131A11019X	sh: 1