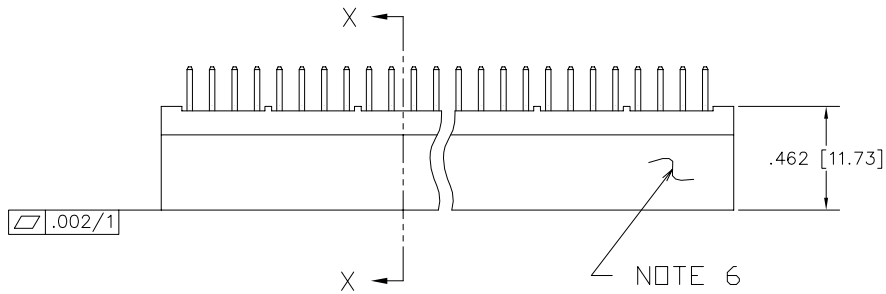
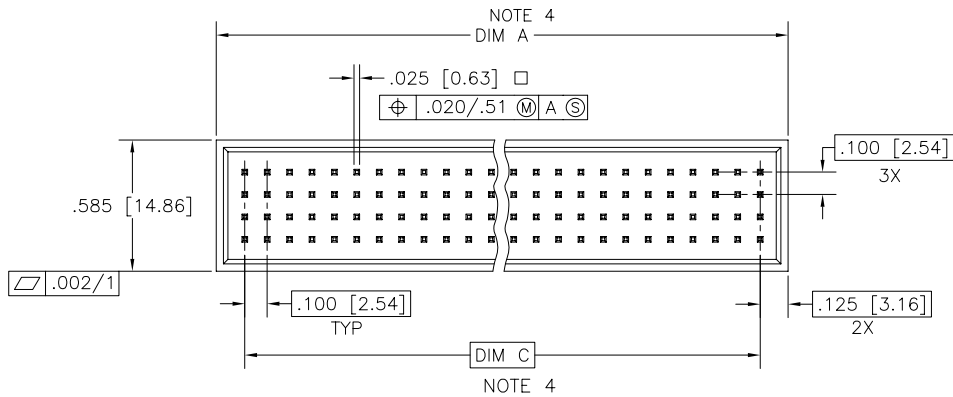


PRODUCT NUMBER  
SEE SHEET 2

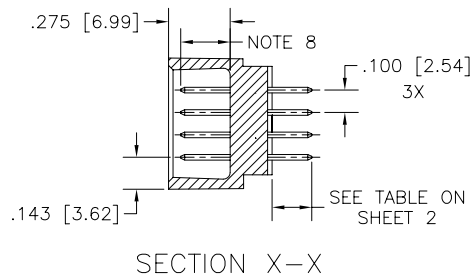


NOTE 6



NOTE 4  
DIM A

NOTE 4  
DIM C



SECTION X-X

mat'l. code		surface ISO 1302 ✓		tolerance ISO 406 ISO 1101		projection INCH/MM		product family HPC	
ltr	ecn no	dr	date	tolerances unless otherwise specified		INCH/MM		title	
C	V20809	MRC	4/7/92	angles	linear	.XX±.01/.3		4 ROW VERTICAL HEADER	
D	V20363	JM	2/21/93	0°±2'		.xxx±.005/.13		CARD CONN. STYLE SOLDER TAILS PINS	
E	V90861	HTB	4/18/99			.xxxx±.0020/.051		scale 1:1	
F	V00278	JWS	2/4/00	dr	D.HORCHLER	7/5/05		dwg no	
G	V05-0632	DCH	7/5/05	engr	D.HORCHLER	7/5/05		sheet 1 of 2 size	
H	V05-1039	DAI	11/15/05	chr	T.BREWBAKER	7/5/05		50357 A3	
J	M06-0260	MHT	7/07/06	appd	D.HORCHLER	7/5/05		type Product Customer Drawing	
sheet index	revision	J	J						
	sheet	1	2						

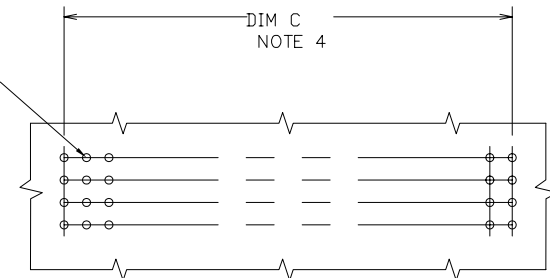


Copyright FCI

PRODUCT NUMBER	NUMBER OF POSITIONS	TAIL LENGTH ±.015/0.38	CONTACT AREA PLATING
50357-1YYYY	YYY, NOTES 1, 2	.177/4.49	30u"/.76u GOLD
50357-3YYYY	YYY, NOTES 1, 2	.177/4.49	50u"/1.27u GOLD
50357-5YYYY	YYY, NOTES 1, 2	.177/4.49	30u"/.76u GXT
50357-5YYYYALF	YYY, NOTES 1, 2	.177/4.49	30u"/.76u GXT
50357-1YYYYJ	YYY, NOTES 1, 2	.120/3.05	30u"/.76u GOLD
50357-3YYYYJ	YYY, NOTES 1, 2	.120/3.05	50u"/1.27u GOLD
50357-5YYYYJ	YYY, NOTES 1, 2	.120/3.05	30u"/.76u GXT
50357-5YYYYJLF	YYY, NOTES 1, 2	.120/3.05	30u"/.76u GXT
50357-1YYYYC	YYY, NOTES 1, 2	.533/13.54	30u"/.76u GOLD
50357-3YYYYC	YYY, NOTES 1, 2	.533/13.54	50u"/1.27u GOLD
50357-5YYYYC	YYY, NOTES 1, 2	.533/13.54	30u"/.76u GXT
50357-5YYYYCLF	YYY, NOTES 1, 2	.533/13.54	30u"/.76u GXT
50357-1YYYYD	YYY, NOTES 1, 2	.733/18.62	30u"/.76u GOLD
50357-3YYYYD	YYY, NOTES 1, 2	.733/18.62	50u"/1.27u GOLD
50357-5YYYYD	YYY, NOTES 1, 2	.733/18.62	30u"/.76u GXT
50357-5YYYYDLF	YYY, NOTES 1, 2	.733/18.62	30u"/.76u GXT
50357-1YYYYG	YYY, NOTES 1, 2	.250/6.35	30u"/.76u GOLD
50357-3YYYYG	YYY, NOTES 1, 2	.250/6.35	50u"/1.27u GOLD
50357-5YYYYG	YYY, NOTES 1, 2	.250/6.35	30u"/.76u GXT
50357-5YYYYGLF	YYY, NOTES 1, 2	.250/6.35	30u"/.76u GXT

NOTES:

- THIS PRODUCT IS CONFIGURED IN SIZES OF 10 THRU 50 COLUMNS IN INCREMENTS OF ONE.  
IE: 10,11,12,13,.....49,50.
- PRODUCT DESCRIPTION CODE:  
50357 - X YYY Z LF  
  - X: LEAD FREE (OPTIONAL WITH GXT VERSION)
  - YYY: TAIL LENGTH (NOTE 5)
  - Z: NO OF POSITIONS
  - LF: PLATING (NOTE 4)
  - 50357: BASE NUMBER
- HOUSING MAT'L: GLASS AND MINERAL FILLED HIGH TEMP. THERMOPLASTIC. FLAME RETARDANT PER UL94V-0. COLOR: BLACK.  
PIN MAT'L: PHOS BRONZE
- DISTANCE CALCULATIONS:  
DIMENSION "A" = .100/2.54 X NO. OF COLUMNS + .15/3.8.  
DIMENSION "C" = .100/2.54 X NO. OF COLUMNS - .100/2.54.
- XXXXX-XXXXXLF PRODUCT MEETS EUROPEAN UNION DIRECTIVES AND OTHER COUNTRY REGULATIONS AS DESCRIBED IN GS-22-008.
- MANUFACTURER'S NAME AND P/N, AND LOT CODE TO APPEAR ON THIS SURFACE PER BUS-12-108.
- FOR PRODUCT PERFORMANCE SEE PRODUCT SPECIFICATION NUMBER BUS-12-090.
- STANDARD MATING LENGTH IS .22/5.6.  
OTHER COMMON LENGTHS AVAILABLE ARE .18/4.6 AND .26/6.6. FIRST-MATE/LAST-BREAK APPLICATIONS CAN BE DEVELOPED BY SELECTIVELY LOADING THESE VARYING MATING LENGTHS - SEE DRAWING P/N 50145.  
CUSTOMER MATING LENGTHS ARE AVAILABLE. CONTACT YOUR CUSTOMER SERVICE REPRESENTATIVE FOR INFORMATION.
- THE HOUSING WILL WITHSTAND EXPOSURE TO 260° C PEAK TEMPERATURE FOR 30 SECONDS IN A WAVE SOLDER APPLICATION.



RECOMMENDED PCB LAYOUT  
ALL HOLES LOCATED ON .100/2.54 GRID UNLESS OTHERWISE SPECIFIED

mat'l. code		surface ISO 1302 ✓	tolerance ISO 406 ISO 1101	projection ⊕	product family HPC
ltr	ecn	no	dr	date	tolerances unless otherwise specified
J					angles linear .xx±.01/.3
					0'±2' .xxx±.005/.13
					.xxxx±.0020/.05
			dr	D.HORCHLER	7/5/05
			enr	D.HORCHLER	7/5/05
			chr	T.BREWBAKER	7/5/05
			app	D.HORCHLER	7/5/05
sheet index	revision sheet				

INCH/MM

scale 1:1

title

4 ROW VERTICAL HEADER

CARD CONN. STYLE SOLDER TAILS PINS

dwg no 50357

sheet 2 of 2 size A3

type Product Customer Drawing