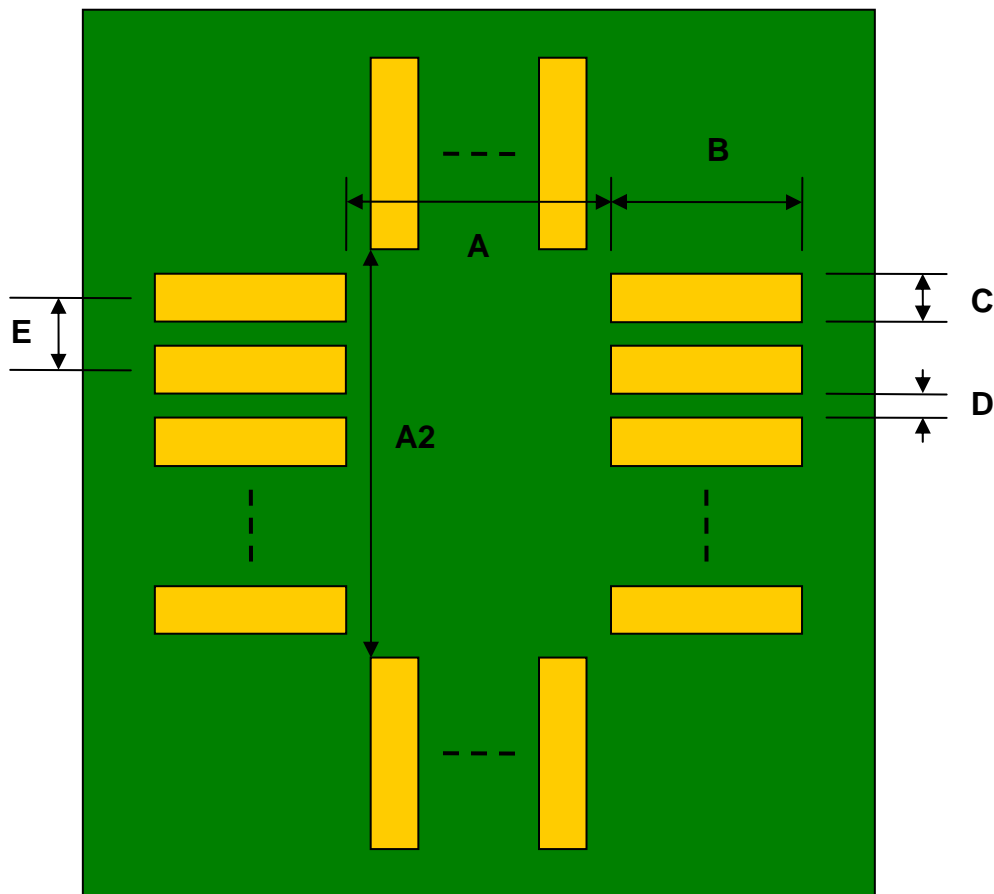


TQFP-52 to DIP-52 SMT Adapter (1.0 mm pitch, 14 x 14 mm body)

DIMENSIONS						
REF.	mm			inches		
	MIN.	TYP.	MAX.	MIN.	TYP.	MAX.
A		14.00				
A2		14.00				
B		2.50				
C		0.50				
D		0.50				
E		1.00				
F					0.600	
G					0.100	
H					0.025	

Top View (SMT Footprint)



(Representative drawing only - not to scale)

Bottom View (DIP Pins)



(Representative drawing only - not to scale)

Side View (DIP Pins)



(Representative drawing only - not to scale)